

- **SL-700** series slit lamp has 3 different models, 2-step, 3-step and 5-step.
- The resolution is improved to 180 lp/mm, it can give you a clean and clear image.
- The illuminance is greatly improved to over 280Klux. It meets the demand of Fundus diagnosis. Especial when these two symptoms happen to the patients: crystalline lens opacities or vitreous opacities.
- Comfortable mechanical operating feeling.
- The range of refractive degree of eyepiece is improved. Now is from +6.00D to -8.00D. When tuning the refractive degree of eyepiece, the cover of eyepiece does not turn along with it, so that avoid the inconvenience for user.
- The distance of left and right optics is 23mm, which is compatible to almost all the brands of beam splitters in the market.
- It's compatible with the Goldman applanation tonometer BQ type.
- The compatibility to different brands of laser adaptor is improved.

SL-700-5 SLIT LAMP

5 STEPS



Beautiful binocular move symmetrically



eyepieces regular



eyepieces stretch



Illumination continuously adjustable



5 steps magnification



SL-700-5L(LED)
SL-700-5H(Halagen)

CE FDA

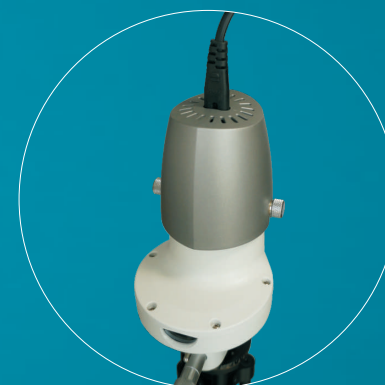
SL-700-3 SLIT LAMP

3 STEPS

3 steps magnification



Unique design for the SL-700 series Slit lamp



Unique design of lamp cover
for fashion and for better heat emission



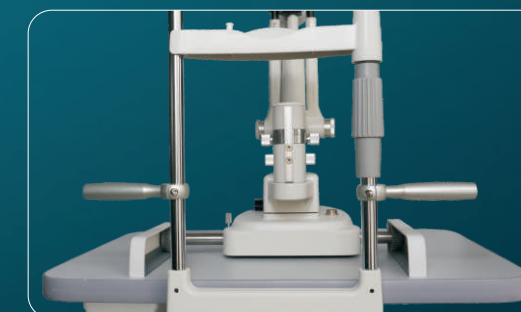
Assemble hole for Goldman applanation
tonometer BQ type

Hollowed arm to tie wires around without mess if needed



SL-700-3L(LED)
SL-700-3H(Halagen)

CE FDA



Patient Hand Rest
on double side of the Chin-rest Rack

SPECIFICATIONS

Microscope

Item no.	SL-700-3H/SL-700-3L	SL-700-5H/SL-700-5L
Type	Galilean system	Galilean system
Model of magnifying	Revolving drum(3 steps)	Revolving drum(5 steps)
Eyepiece	12.5 X	12.5 X
Total magnification rate (Field-of-view) in mm	10X(Φ19.8), 16X(Φ12.5), 25X(Φ7.8)	6X(Φ31.2), 10X(Φ19.8), 16X(Φ12.5), 25X(Φ7.8), 40X(Φ5.0)
Range of P.D. Adjustment	52mm to 78mm	52mm to 78mm
Diopter adjustment	+6D to -8D	+6D to -8D

Slit illumination

Slit width.....Continuously variable from 0 to 14mm
 Slit length.....Continuously variable from 1 to 14mm
 Illumination fields Circle.....14/10/5/3/2/1/0.2mm
 Test mark with fixation star
 Slit image radial range.....0~180°
 Slit inclination 4 steps.....5°, 10°, 15°, 20°
 Filters.....Heat-absorbing filter, ND filter,
 Red-free, Cobalt Blue
 Light source.....Halogen-bulb 6V 20W/LED 3V 3W
 Slit illumination intensity.....Halogen-bulb :150k Lux
 LED: 180k Lux

Instrument Base

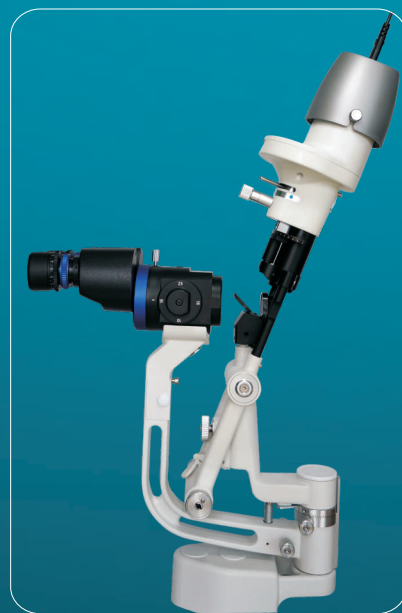
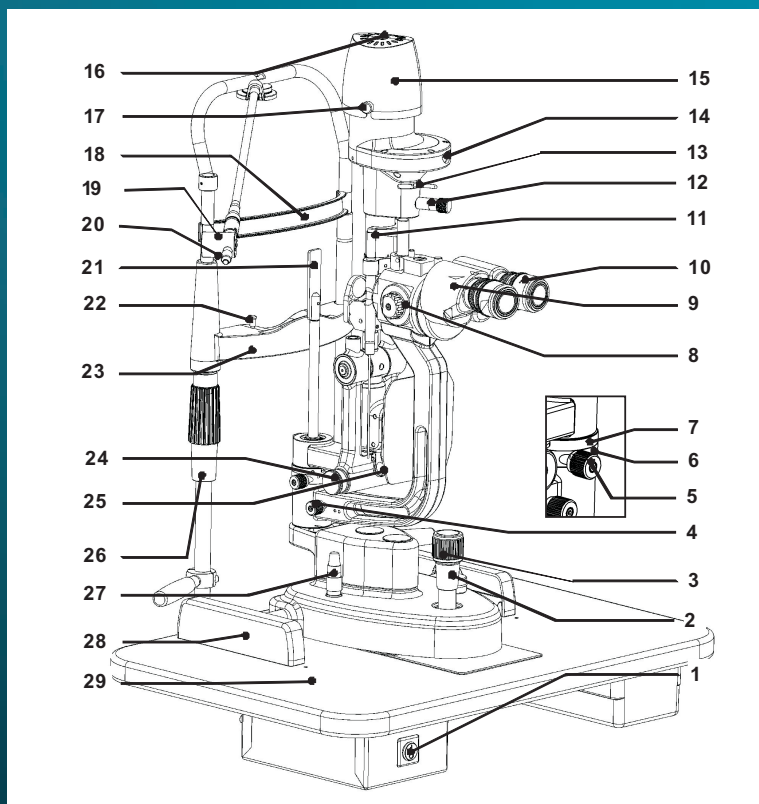
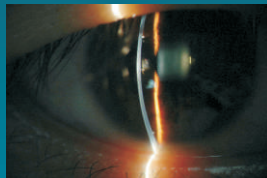
Operation.....3-dimensional operation of the joystick
 Range of adjustment.....110mm(longitudinal), 110mm(lateral)
 30mm(vertical), 15(fine)

Chin-rest

Fixation light.....Red LED
 Vertical adjustment.....80mm

Power supply

Input.....220V/110V±10%, 50Hz/60Hz
 Output.....30VA(max.)
 Light source: Halogen bulb 6V 20W/LED 3V 3W
 Fixation light: 3V



Slit can be incline for **SL-700-5**,
SL-700-3 and **SL-700-2**
 Inclination degree: 5°, 10°, 15°, 20°

SL-700-2

SLIT LAMP

2 STEPS

FEATURES

- The excellent optical system ensures a clear and sharp image for users.
- 4 kinds of slit inclination are available.
- Continuously adjustment of illumination.
- With hand-rest for the chin-rest.

SPECIFICATIONS

Microscope

Type.....Converging stereoscope
 Eyepiece.....10X
 Angle between eyepieces.....13°
 Magnification change.....2 steps by objective lens rotate
 Total magnification rate(Field-of-view).....10X(Φ18), 16X(Φ14.5)
 Range of P.D. Adjustment.....52mm to 78mm
 Diopter adjustment+5D to -8D

Slit illumination

Slit width.....Continuously variable from 0 to 14mm
 Slit length.....Continuously variable from 1 to 14mm
 Illumination fields Circle.....14/10/5/3/2/1/0.2mm
 Test mark with fixation star
 Slit image radial range.....0~180°
 Filters.....Heat-absorbing filter, ND filter,
 Red-free, Cobalt Blue
 Light source.....Halogen-bulb 6V 20W/LED 3V 3W
 Slit illumination intensity.....≥280k Lux

Instrument Base

Operation.....3-dimensional operation of the joystick
 Range of adjustment.....1100mm(longitudinal), 110mm(lateral)
 30mm(vertical), 15(fine)

Chin-rest

Fixation light.....Red LED
 Vertical adjustment.....80mm

Power supply

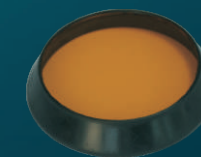
Input.....220V/110V±10%, 50Hz/60Hz
 Output.....30VA(max.)
 Light source: Halogen bulb 6V 20W/LED 3V 3W
 Fixation light: 3V



CE FDA

SL-700-2L(LED)
 SL-700-2H(Halagen)

Yellow filter for SL-700series Slit Lamp is optional



B1322

Metal frame makes it easy to be put on or off
 the magnetic back side of slit lamp

SL-700D DIGITAL SLIT LAMP

FEATURES

This system is made up by the SL-700 combining with the following accessories: beam splitter, digital camera adaptor, CANON DSLR camera, back ground illumination LED model(3V). Besides observing the eye diseases, it can take pictures and store the image, print and store the case history, this is convenient to observe the patient's condition and evaluate remedial effect.



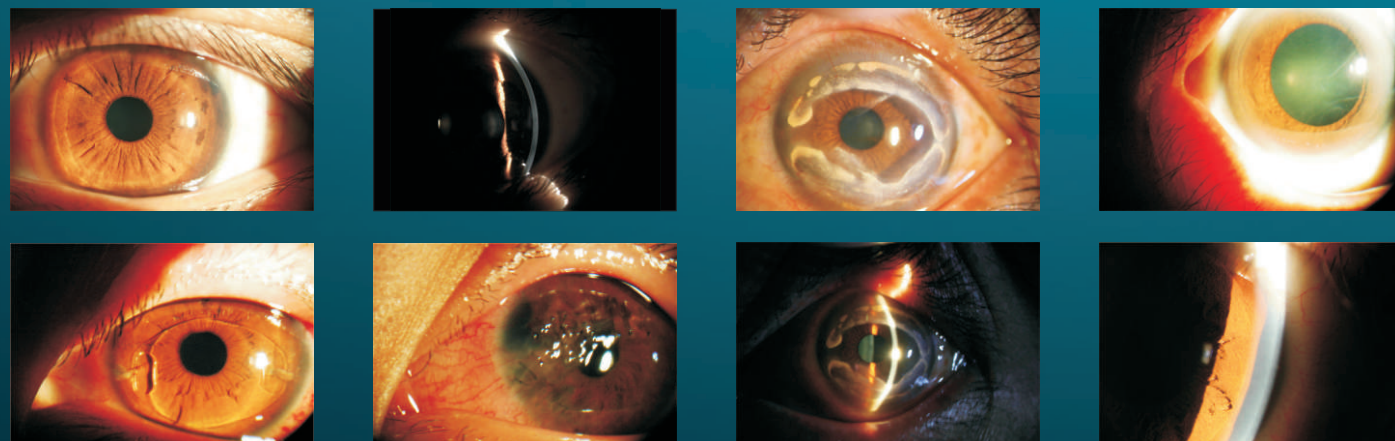
Background illumination

CAMERA RECOMMENDED SETTING

- STEP 1) Turn the <Mode dial> to <M>.
- STEP 2) Set the shutter speed 1/10 to 1/30 sec
- STEP 3) Image-recording quality select <M>.
- STEP 4) ISO setting: select ISO speed "ISO 800" at least
- STEP 5) White Balance: select "Tungsten"

CE FDA

Both SL-700-3 and SL-700-5 slit lamp can be upgraded to SL-700D



SL-700T ANALYZE DIGITAL SLIT LAMP

With software

- This system is made up by the SL-700D combining with the image processing system.
- This system is not only a work platform for ophthalmic diagnosis, but also a case database.
- It can easily capture digital photos of the cornea, sclera, anterior chamber, iris, lens, retina and set up patients files and effectively manage them.

FEATURES

- What doctors see from eyepieces is showed synchronously on camera display screen, which is very convenient for the doctors to capture the best and clearest pictures.
- Background illumination specifically designed for darkroom environments.
- Fine photos immediately taken by the button on joystick.
- Used for establishing the full data of patients, processing images, measuring the length, area and so on.
- Famous for its excellent optics.

SOFTWARE OPERATING ENVIRONMENT

Hardware:

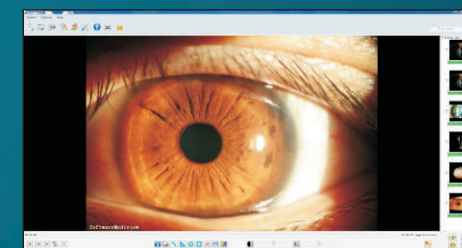
CPU: Intel Core Due, 2.00GHZ or above
Minimum EMS memory:1024MB or above
Screen resolution:1028*1024(17inch or lage size monitor)
Graphice Card: update to the latest display driver(support DX9C)
Hard ware space:80GB or above
Type of port:USB:1.1~2.0 and COM inter face

Operating system:

Windows XP and Windows 7 (Caution: Windows Vista, Windows 8 is not compatible)

Digital SLR camera:

Digital camera is not standard accessory.
This system is fit for Canon EOS 700D/750D/800D/1200D/1500D, please do not use digital cameras not listed here.



CE FDA

T170 APPLANATION TONOMETER

FEATURES

Based on the Goldmann principle which is a world widely accepted gold standard, T170 applanation tonometer can provide fast and accurate IOP measurement data to clinical diagnosis and treatment.

Adjustable mechanical design ensures the reliable measurement result and durable performance of the instrument.

Repeated measuring procedures do not reduce the natural ocular pressure of the patient.

In combination with most of slit lamps.

The measurement can be carried out on the patient sitting at the slit lamp in conjunction with other routine microscopic examinations.

SPECIFICATIONS

Range of Measurement.....0mmHg~ 80mmHg (0 kPa~10.64kPa)

Moving Range of the Rings.....1.53x2=3.06mm

Prism Diameter.....7mm

Moving Range of Prism.....±1.5mm

Dimension.....172mmx80mmx80mm

Net Weight.....R type:0.8Kgs T type:0.5Kgs



R type

T type

CE FDA

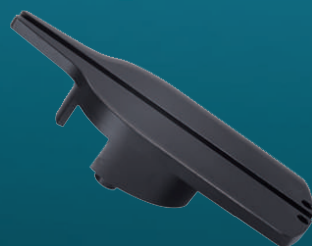
B1335 TONOMETER ADAPTOR

R TYPE



B1336 TONOMETER ADAPTOR

T TYPE



OPTIONAL ACCESSORIES OF SLIT LAMP

(for SL-700 series slit lamp)



B1333

1/3" CCD adaptor



B1331

Beam Splitter



B1332

Digital camera adaptor for
CANON EOS series EF mount



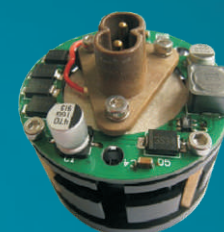
B1334

Backlit Background
Illumination Module



B1301

Bulb for Slit Lamp
SL-700 series
(6V20W)



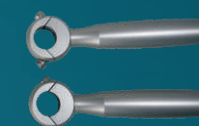
B1303

LED module



B1323

Measuring Eyepiece



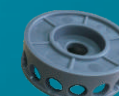
B1317

Hand rest



B1313

Power box



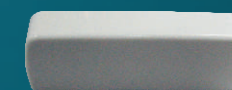
B1318

Wheel



B1314

Chain

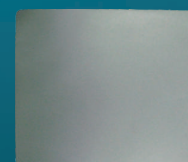
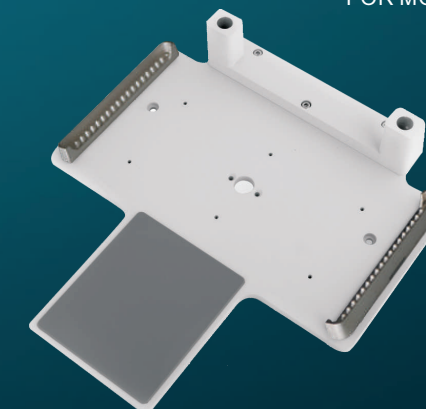


B1315

Chain cover

B1311 METAL PLATE

FOR MOBILE SLIT LAMP



B1316

Moving plate



B1312

Slit Lamp Plate for
American style table

LM-900 AUTO LENSMETER

Accurate & High speed

The 4th generation operation system, with HD screen and blue ray

FEATURES

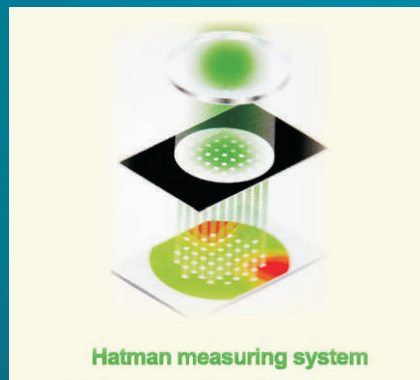
- Hartman testing method, CPU high-speed precise computing
- Automatic recognition of single and progressive lens
- Automatic measurement, reading and memorying the data
- ABBE compensation no need
- Broad contents, strong performances, simple and convenient operation
- Latest international designing concept of collecting technology, mode and individuality
- With PD, built-in printer and inner UV part
- Accelerator key used

ADVANTAGES

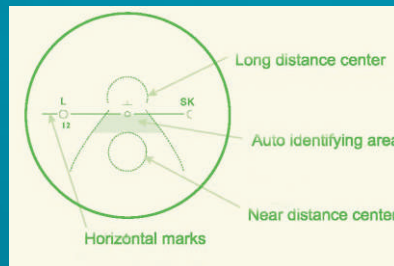
- 1.More functions
- 2.High speed(not simple speed only, that's the image taking in, data transmitting, calculating and processing in synchrony and precision and high speed)
- 3.High precision(powerful software processing capacity, unparalleled house-in optical circuit structure designed)
- 4.High quality components, high standard, fine workmanship (three key standards: strict components purchasing, production controlling and testing)
- 5.Substantial, generous and integrated appearance designing
- 6.High stability(failure rate at 1% or so)



CE FDA



Hartman measuring system



Auto identifying system of progressive lens



Technical advantages

- 1.Dark dyeing lens and polarized lens can be measured
- 2.Low power sunglass lens can be measured (± 0.12 inside of can be measured)
- 3.Surface scratched lens can be measured (the surface film of the weared lens seriously come off or degenerate)
- 4.Real UV measure (can measure the midway penetrating value)
- 5.Real value measured especially for RDD and ADD
 - (Real measuring to the original data per each point of lens, not make any experienced disposal)
- 6.ABBE compensation no required when different refraction rate lens can be measure
- 7.Wide measuring range(± 35.00 , error ± 0.25 inside of)
- 8.Utmost value measure(can measure the residual astigmatism power in lens)
- 9.Auto identifying system(judge the lens type automatically and accurately, not make an erroneous judgement)
- 10.Connect with computer(directly transmit the measured data into computer in stock for use)

SPECIFICATIONS

Measuring Range

Sphere.....0 to $\pm 35D$ (0.01D, 0.06D, 0.12D, 0.25D steps)
 Cylinder.....0 to $\pm 10D$ (0.01D, 0.06D, 0.12D, 0.25D steps)
 Axis.....0-180°(1° steps)
 ADD.....0 to 10D (0.01D, 0.06D, 0.12D, 0.25D steps)
 Prism.....0 to 15 Δ (0.01 Δ steps)

Mode

Cylinder.....+,+/-,-
 Prism.....X-Y: Cartesian Coordinates H:I, O. V:U,D
 P-B: Polar Coordinates
 mm: mm expression

Reading resolving power.....0.01D, 0.06D, 0.12D, 0.25D
 Contact lens.....0 to $\pm 25D$, BC 6.00 to 9.00
 Measuring mode.....single vision lens/bifocal lens/trifocal lens
 progressive lens/contact lens

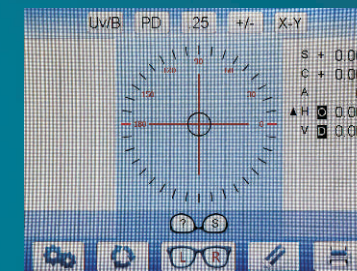
Others

Lens Diameter..... $\Phi 20$ to $\Phi 100mm$
 PD.....40 to 90mm(0.5mm steps)
 UV transmissivity test
 Measurable transmissivity.....>10%; >20% at $\pm 10D$ and over
 Printer.....Built-in thermal print
 Thermosensitive paper size.....57mm
 Display.....TFT LCD (5.7")
 Power.....AC100V to 240V, 40VA
 Product size.....210(L)x190(W)x420(H)mm
 Net weight.....4Kgs

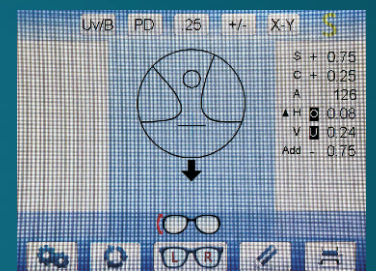


White color is available

Auto identifying

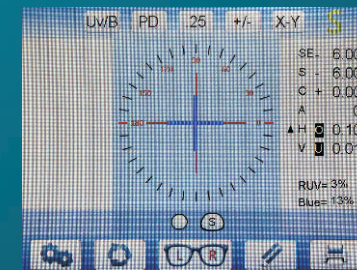


Auto identify interface

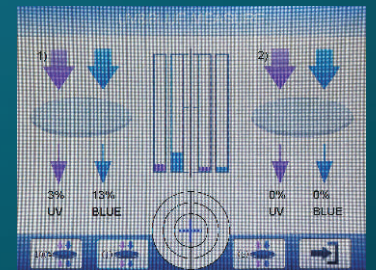


Wrong position interface

Real UV test



UV penetrability



UV compare

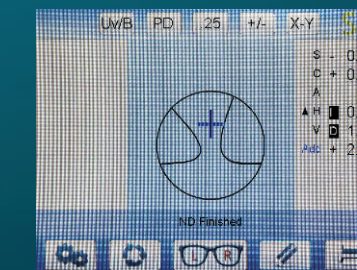
Standard Accessories



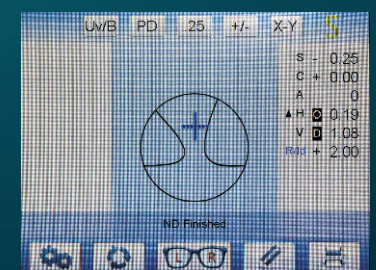
Ink pen

Printing paper

Progressive lens measurement



ADD measurement



RDD measurement

ASPHERICAL LENS

Indirect Diagnostic lens

- MEDOP Retina Lenses are precision 2 sides aspheric lens that yield an extremely wide field of view and sharp image.
- The double aspheric design of retina lenses can effectively reduce the oblique spherical aberration and lateral chromatic distortion in large field of view and yield a clear and sharp image.



Item No.	20D STD	78D STD	90D STD
Image Magnification	3.13X	0.93X	0.76X
Static Fov	46°	81.4°-97°	74.2°-89°
Working Distance	50mm	8mm	7mm
Clear Aperture	48mm	26mm	21mm
Dimension(mm)	Ø56X20	Ø33X15	Ø27X13

CE FDA



FEATURES

1. The lens material is high quality optical glass.
2. The lens have many layers of professional AR coating(anti-reflection film).

USE

1. As a kind of medical magnifier, aspherical lens(indirect diagnostic lens) has a wide-angle. It can be used with slit lamp microscope, binocular ophthalmoscope to diagnose the rear and bottom of the eye's vitreous body.
2. When used with slit lamp or ophthalmoscope with the lens, retina, second nerve, macula luteal and capillary vessel can be observed expressly. Without touching the patient's eye, the image has a wide angle of view, large image and strong third dimension etc.

DIRECTIONS FOR USE

1. The silver ring on the lens holder should be held toward the patient's eye during examination, which can ensure the right using direction and may provide for best image quality.
2. Keep the lens centering on the patient's pupil.
3. Hold the lens far enough form the patient's eye so that the retinal image has the same diameter with the lens.
4. Keep the illumination sources as dark as possible to minimize reflections and image contrast.
5. Keep the lens clean to minimize glare form the lens surface.

CLEANING

Clean with alcohol or the mixture of aether and alcohol.



Packing Case

BRT-3

PD METER

FEATURES

- Pupil distance measure
- Eye wire distance measure
- Pupil height measure
- SPH +2.00D compensation available

SPECIFICATIONS

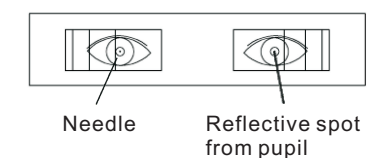
Data Range

Binocular PD.....	46-82mm
Monocular PD.....	23-41mm
PH.....	12-28mm
LD.....	6-20mm
Distance range.....	300mm- infinity ∞
Indication error.....	≤0.5mm
Rounding error.....	≤0.5mm
Asymmetric error.....	≤0.5mm
Power source.....	DC 3V(2pcs AA batteries, not included)
Automatic standby.....	2 minutes
Instrument size.....	220(L)X160(W)X60(H)mm
Net weight.....	600g

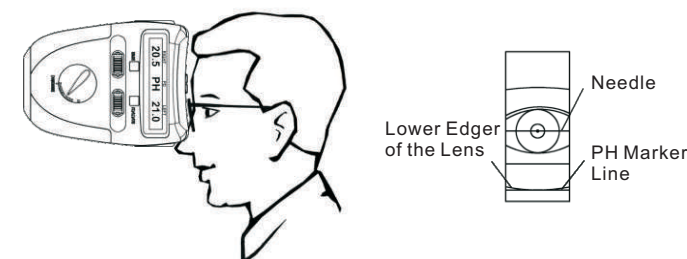


CE FDA

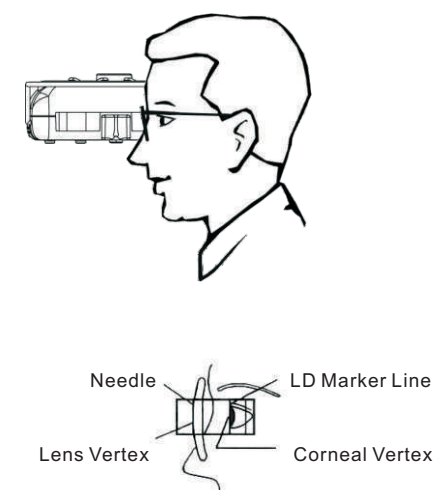
Measurement of pupil distance



Measurement of pupil height



Measurement from lens vertex to corneal vertex



ZN-270 LED VISUAL CHART 27" HD

POLARIZED SCREEN

•Big size monitor, clear display

27" TFT-LED monitor, 1920x1080 pixels, 200CD/m²

•3D polarization vision chart

Apply to binocular balance test and stereo visual function test

•Optotypes can be changed randomly



CE FDA

Both table stand and wall mount are as standard accessories

Standard accessories



Polarized filters



Remote



Wall mount



U disc

Optional accessories



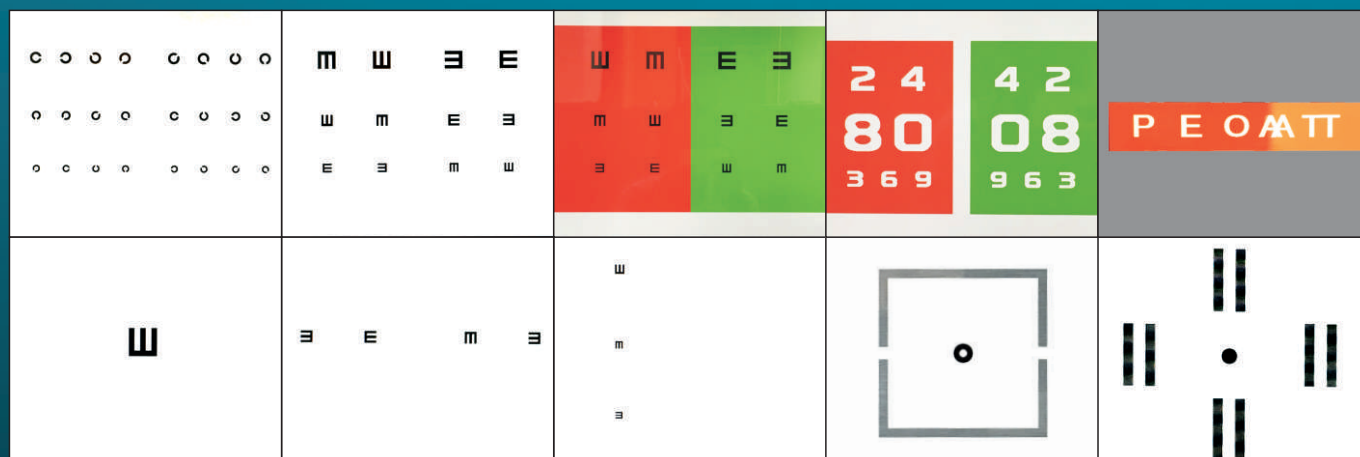
L-72A

Floor stand for screen max. 27"

SPECIFICATIONS

LED monitor....27-inch TFT Panel, 1920x1080 pixels, 200CD/m²
Optotype.....E, C(Landolt), Alphabet, Numbers, Children
Visual unit.....Decimal, Snellen(ft, 20/20), Snellen(m, 6/6)
Dis.....1M~6M (in steps of 0.1m)
Mask type.....Single mask, Horizontal mask, Vertical mask,
Red/Green mask, White/Black mask,
Contrast adjustment, Red/Green adjustment

Special test masks.....Ishihara Test, Cross cylinder,
Astigmatism Test, Cross Grid,
Fixation point Test, Red/Green Panel,
Worth Test, Red/Green Balance,
Traffic light, Coincidence Test, Stereo Test,
Schober Test, ETDRS
Other functions.....Randomization Optotypes Playing function,
R/G setting function, Video playing function,
Screen-saver function, standby function

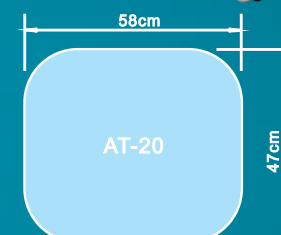


AT-20 POWER TABLE

Improved Table Top: surface PVC blister/HDF



CE FDA



SPECIFICATIONS

Table top size.....58X47cm
Height adjustment.....650~840mm
Max. load.....60kgs
Gross weight.....18.5kgs
Input voltage.....220V/50Hz; 110V/60Hz



Two power supply sockets



One power supply socket

Both 110V American socket and 220V European socket are available.



Improved castor makes the table move more smoothly. Bigger brake makes it easier to lock the table by foot instead of by hand.

I2101

AT-20B POWER TABLE

FEATURES

Bigger table top size for two machines: 90X50cm
Other functions are same as AT-20

OPTIONAL ACCESSORIES

Enhanced metal plate support under the table top



I2102

Improved 2.5" castor makes the table more stable, and more smooth in moving



CE FDA

ALE-1000A PATTENLESS LENS EDGER

2D

ALE-1000 Main Edger

Stable main machine, easy operation, convenient maintenance.

Dimension.....730mmx510mmx410mm
Weight.....55kgs
Voltage.....AC220V/110V 50/60Hz
Power.....550W
Accuracy.....Tolerance±0.01mm
Size range.....20mm~80mm
Axis accuracy.....0.1°
The adjustable step length of size.....0.05mm
Clamping pressure.....80kgs
Lens Material.....PC, Glass, CR, HI, HR, TC
The processing type.....pointy edges, platband, bevel polishing, platband polishing
Screen.....truecolor, 5.7 inch TFT LCD, lens photograph displayed as 1:1 and with use-friendly operating interface



CE



Optical path without parallax, original shape scanning, more accurate.

ST-1200 Scanner

Optical path without parallax, original shape scanning, more accurate.

Dimension.....325mmx250mmx205mm
Weight.....5kgs
Voltage.....AC230V/115V 50/60Hz
Power.....60W
ADD adjustment range.....6mm
Screen tilt angle.....0~130°
Max storage.....500 sets
Touch screen.....7 inch capacitive screen
Quantity connecting with the main machine.....2 units



ALE-1000A



Adapt to PC, Glass, Resin, HI, HC and TR lens material.



Have the optical centering and geometric centering modes.



Three grade headpiece pressure to prevent the lens from being out of axis.



Three grade headpiece pressure

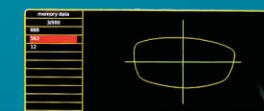


All English and graphical menu, easy operation and convenient maintenance.

ST-1200



Digital template can edit the figure



500 sets lenses data storage



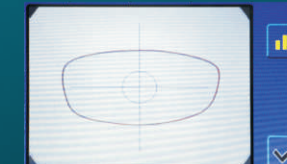
One scanner with two main machines



Turn out to install the suction cup, more easy operation.



Special design suction cup holder to realize lens returning by one push



It is adjustable for the scanning light source, more than 98% Demo lenses are available.



TINE 1: Bevel 1 is suitable for Index beyond 1.61 or harder glasses.
TINE 2: Bevel 2 is suitable for Index under 1.61 or high curve glasses.



LE-400A AUTOMATIC LENS EDGER

FEATURES

With the automatic emendation system in this new model, it can do automatic emendation when the machine starts up, assure the size of lens(left and right) is uniform and improve the precision.

SPECIFICATIONS

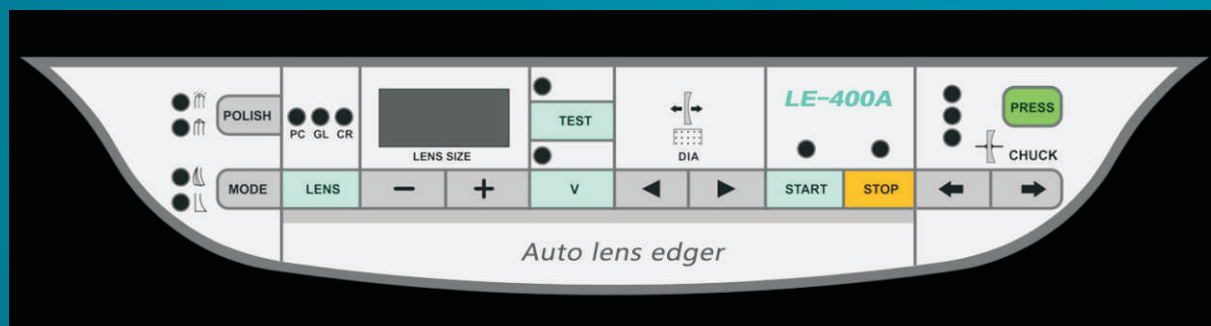
The size of Diamond wheel..... PC wheel: 100X15.6mm
Glass wheel: 100X16mm
V wheel: 100X23mm
Flat style polishing wheel: 100X11mm
Available lens range.....22~100mm
The processing type.....pointy edges, platband, flat polishing
The lens material.....CR, Glass, PC
Size.....550(L)X510(W)X410(H)mm
Voltage.....220V±10%, 50Hz/110V±10%, 60Hz
Power.....500W

Function of LE-400A

BEVEL POLISH function is not available.



CE



Water box and water pump is standard accessories



Cabinet is optional accessory



Wheel of LE-400A



Wheel of LE-420A

LE-420A AUTOMATIC LENS EDGER

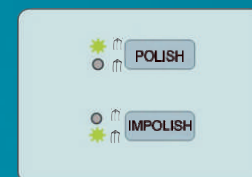
FEATURES

LE-420A has all functions of LE-400A, furthermore, it has PC bevel polishing function.

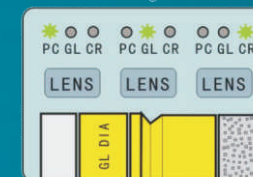
SPECIFICATIONS

The size of Diamond wheel..... PC wheel: 100X15.6mm
Glass wheel: 100X14mm
V wheel: 100X19mm
Flat style & bevel polishing wheel: 100X19mm
Available lens range.....22~100mm
The processing type.....pointy edges, platband, flat polishing, bevel polishing
The lens material.....CR, Glass, PC
Size.....550(L)X510(W)X410(H)mm
Voltage.....220V±10%, 50Hz/110V±10%, 60Hz
Power.....500W

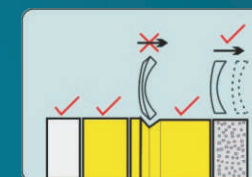
Function of LE-420A



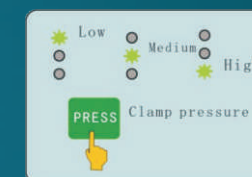
POLISH
Polishing and impolishing selector



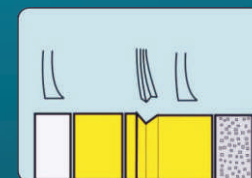
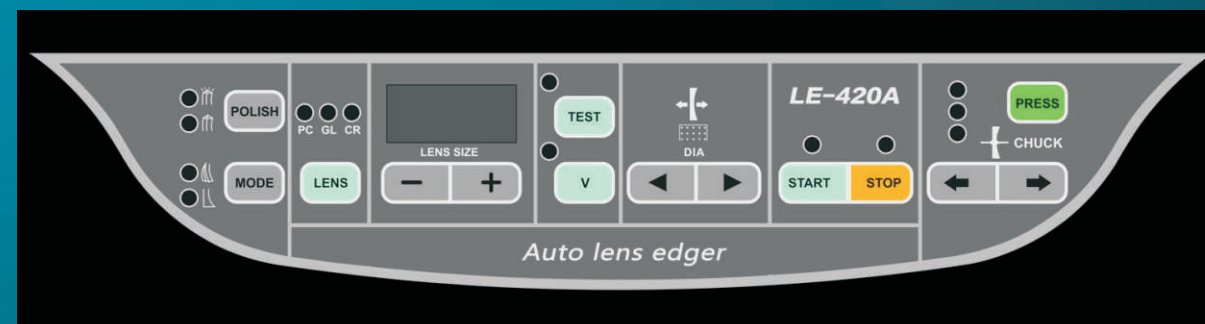
LENS
Various materials lens processing. Select different wheel as per material of lens, save time and save trouble.



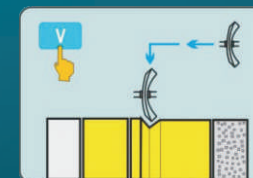
DIA
Use diamond wheels effectively. The grinding place can be moved for prolong the life of the wheels. Efficiently utilize the width of the abrasive disc.



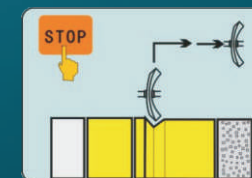
CLAMP PRESSURE
3 kinds of pressure for selecting



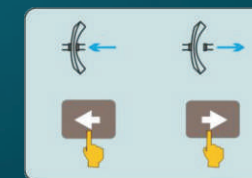
MODE
Beveling and flat edge selector



V TEST
V for Re-edging
TEST for normal test



STOP
It has been used when a pause is needed during the grinding process and also to be restored to the original place.



CHUCK
Automatic clamping lens system.

LE-300A AUTOMATIC LENS EDGER

FEATURES

With the automatic emendation system in this new model, it can do automatic emendation when the machine starts up, assure the size of lens (left and right) is uniform and improve the precision.

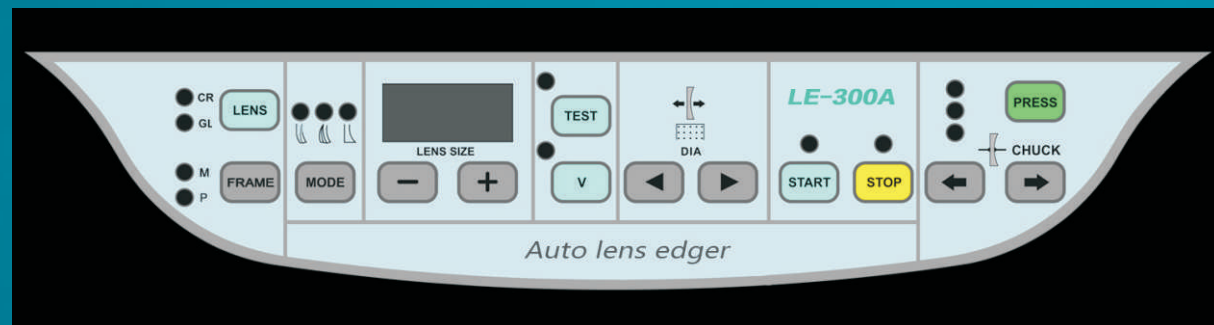
SPECIFICATIONS

The size of Diamond wheel..... CR wheel: 100X16mm
Glass wheel: 100X16mm
V wheel: 100X23mm
Polishing wheel: 100X11mm
Available lens range.....22~100mm
The processing type.....pointy edges, platband, flat polishing
The lens material.....CR, Glass
Size.....550(L)X510(W)X410(H)mm
Voltage.....220V±10%, 50Hz/110V±10%, 60Hz
Power.....500W

Function of LE-300A



CE



Wheel of LE-300A



Standard accessories for LE series auto lens edger



K1101



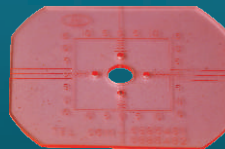
K1102



K1103



K1104



K1121

LE-520 AUTOMATIC LENS EDGER

FEATURES

- Beveling polishing function
- Pressurizing automatically
- PC auto edger
- The 3rd generation mainboard
- Double bevel model

SPECIFICATIONS

The size of Diamond wheel.....PC wheel: Φ100X15.6mm
V wheel: Φ100X19mm
Bevel polishing wheel(bevel 1): Φ100X19mm
V wheel(bevel 2): Φ100X11mm
Available lens range.....Φ22~100mm
The processing type.....pointy edges, platband, flat polishing, bevel polishing
The lens material.....CR, Glass, PC
Size.....550(L)X510(W)X410(H)mm
Voltage.....220V±10%, 50Hz/110V±10%, 60Hz
Power.....500W

Equipped with specific materials, the LE-520 automatic lens edger inherits the design style of Medop LE series auto lens edger, and improve the bevel wheel for high curve lens instead of the glass wheel.

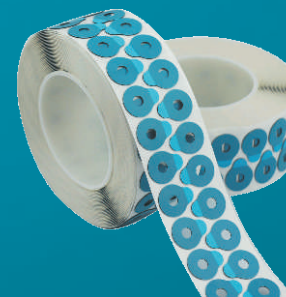


CE

BLOCK PADS for LE series lens edger

T648 BLOCK PADS

21mm



T650 BLOCK PADS

18x25mm



Box packing
1000pcs pads each box

GRINDING WHEEL for LE series lens edger

T671



PC wheel
100(OD)x17(ID)X15.6(T)mm

T672



V wheel
100(OD)x17(ID)X19(T)mm

T673



Polishing wheel
100(OD)x17(ID)X19(T)mm

T674



Glass wheel
100(OD)x17(ID)X14(T)mm

CP-10B LENS DRILLING MACHINE
CP-10C LENS DRILLING MACHINE

AC motor

FEATURES

It is an indispensable machine to fully automatic edger.
Use this machine to make direct drilling in the gasket.
The gasket can replace for dieplate in using the edger.
It saves the trouble of opening the mould.
It is practical, convenient and labor-saving



CP-10B: With LED lamp

CP-10C: Without LED lamp

CE

CP-5B LED LAYOUT BLOCKER

FEATURES

- Compact and pretty appearance design
- No vision difference on the display screen, no deformation and accurate lens layout obtained
- Compensating the accuracy of the lens and suction cup position
- Bifocal lens can be positioned quickly and accurately,
- The small lens can also be put in clear projection



CE

WB-3310A LENS DRILLING MACHINE

FEATURES

Add one sliding lens-fix device, can slide out aligned with Axis, and press/fix the lens for drilling it



CE

PM-400AT PATTERN MAKER

FEATURES

- Being based on the patterned lens or the original lens from your eyeglasses to make the standard pattern .
- It is easy and convenient to use clamping device equipped with 3 suction cup bases according to different model of lens edger and easy operation, quick speed of cutting and accuracy.
- Suction cup base: Topcon, Briot, Takubo

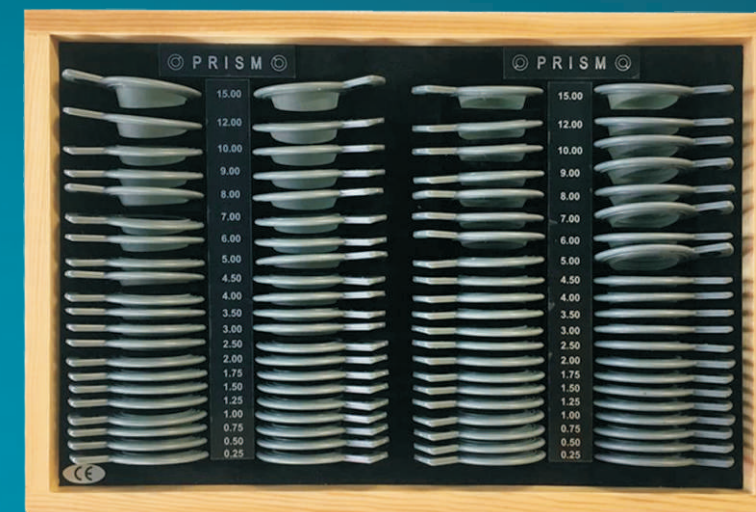


CE

BR11-2-84 PRISM SET

Prism power: $\Delta 0.25, \Delta 0.50, \Delta 0.75, \Delta 1.00, \Delta 1.25, \Delta 1.50, \Delta 1.75,$
 $\Delta 2.00, \Delta 2.50, \Delta 3.00, \Delta 3.50, \Delta 4.00, \Delta 4.50, \Delta 5.00,$
 $\Delta 6.00, \Delta 7.00, \Delta 8.00, \Delta 9.00, \Delta 10.00, \Delta 12.00, \Delta 15.00$

Coated lenses are optional



CE FDA



HC-23M PNEUMATIC CHAIR

FEATURES

Small and functional
Good choice for combine table

PACKING:

1pc/carton
49X23X49cm/7kgs

SPECIFICATIONS

Diameter of the seat: 34cm
Diameter of metal base: 49cm
Height adjustment: 53-73cm
Max loading: 140kgs



CE FDA

TABLE OF CONTENT

A	REFRACTOMETER.....	P34 - P36
B	SLIT LAMP & ACCESSORIES.....	P37 - P44
C	PHOROPTOR.....	P45 - P50
D	VISION CHARTS.....	P51 - P54
E	TRIAL LENS SET & FRAME.....	P55 - P58
F	OPHTHALMOSCOPE & RETINOSCOPE.....	P59 - P62
G	OPHTHALMIC UNIT & POWER TABLE & CHAIR.....	P63 - P72
H	OPTICAL APPLIANCE/DEVICE/APPARATUS.....	P73 - P75
I	LAB EQUIPMENTS & TOOLS.....	P76 - P84
J	OPHTHALMOLOGY MEDICAL EQUIPMENTS.....	P85 - P87
K	OPERATION MICROSCOPE & TABLE.....	P88 - P92
L	TOOL SETS.....	P93 - P93
M	ACCESSORIES.....	P94 - P94

RM-9000 AUTO REFRACTOMETER

COLOR LCD SCREEN
BLACK & WHITE CCD

FEATURES

- 1) Using the ARM processor and the latest domestic image processing, the system is fast and the image is clear.
- 2) Japan's mature optical path system, humanized automatic mist measurement process, to reduce the error caused by adjustment, more precise measurements.
- 3) Light rack with integral casting, CNC machining, measuring system is more stable, good consistency.
- 4) Color LCD display, 5.7 inches man-machine interface is more comfortable.
- 5) PD automatic measurement function, automatically PD value
- 6) One key lock function, quickly locking mobile platforms
- 7) Innovative designs, according with the structure of human body engineering, to bring customers good aesthetic feeling and comfortable
- 8) Data transmission with CV7200, improved efficiency of online



CE FDA



5.7 inch color LCD screen



Most each record 10 times, automatic display representative value



Intuitive interface, convenient adjustment, the VD value, the precision and print mode, etc.



Automatic mist target, effectively reduce the measurement error caused by adjusting



One key lock function, convenient and practical

SPECIFICATIONS

Measurement Range

Vertex distance.....0.0,12.0,13.75,15mm
Sphere.....-20D~+20D(0.12/0.25D step)
Cylinder.....0~±10D(0.12/0.25D step)
Axis.....1~180°(1° step)
Pupil distance.....30~85mm
Minimum pupil diameter.....Ø2.0mm
Target.....automatic fogging target

Hardware specifications

Monitor.....5.7" color LCD
Printer.....Fast thermal printer
Power saving function.....OFF, 5/15 mins (selectable)
Power supply.....AC110~220V, 60/50Hz, 50W
Dimension/weight.....288x500x480mm(14kgs)



Fast thermal printer

ARK7800A AUTO REF-KERATOMETER with manual
ARK7800B AUTO REF-KERATOMETER with auto tracking

FEATURES

- New optical system, unique imaging impression
- Hartman imaging analyzing and processing technology, accurate measurement result
- TFT touch screen, can move front and back freely
- Motorized chinrest
- Auto paper-cutting printer
- Auto tracking and focusing during measuring



CE FDA



Adjustable 7" LCD Touch Screen

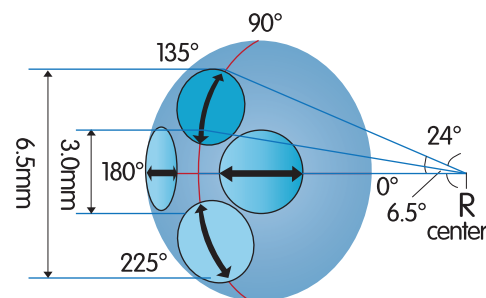
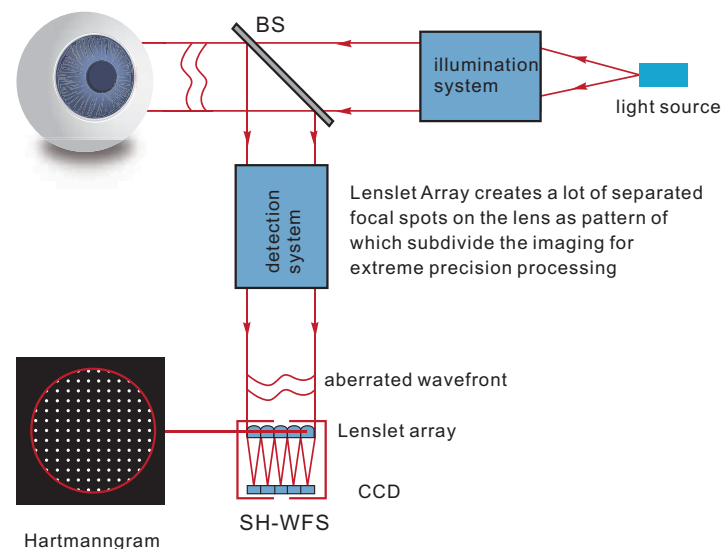


Motorized Chin Rest



Auto Paper-Cutting Thermal Printer

Hartmann imaging processing technology



Measure peripheral keratometry precision of eyes with contact lenses fitting

SPECIFICATIONS

•Refractometry:

Vertex Distance(VD).....0,12,13.75,15mm
Sphere(SPH).....-30.00~+25.00(wide range)
(VD=12mm,0.01,0.06,0.12 or 0.25D)
Cylinder(CYL).....0.00~±10.00D(0.06,0.12 or 0.25D)
Axis(AX).....1~180°(increment:1°)
Sign of cylinder.....-,+,±
Pupil Distance(PD).....10~86mm
Pupil diameter.....Ø2.00~Ø8.00mm
Minimum pupil diameter.....Ø2.0mm

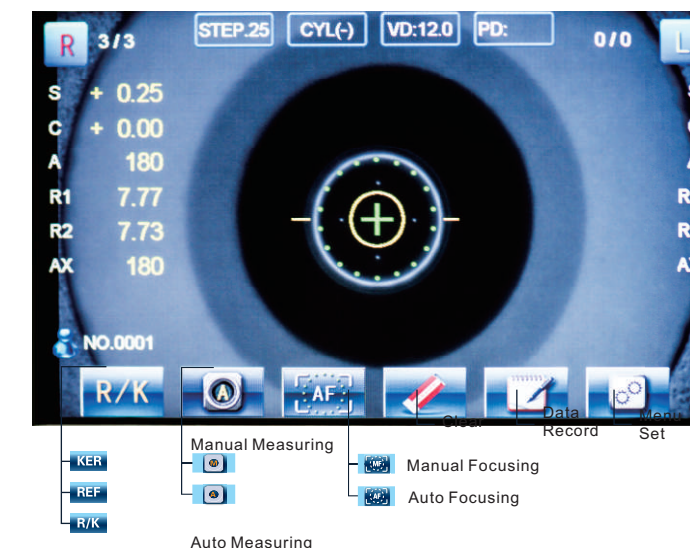
•Others:

Monitor.....Sharp 7 inch color TFT LCD touch screen
(Angle of view adjustable)
Built-in Printer.....57mm thermal printer, auto paper-cutting
Measuring Time.....<0.5 second
Measuring light energy.....<30μw(Insure measuring safety)
Memory of Data.....10 measured values for each eye,
both Refractometry and Keratometry
Power supply.....AC 100~240V, 50/60Hz
Packing dimension.....680(W)X400(D)X640(H)mm
Net weight/Gross weight.....22kgs/26.5kgs
Data output.....RS-232 interface

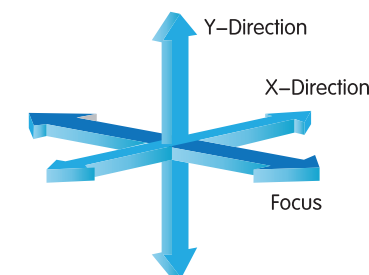
•Keratometry:

Radius of curvature.....5.00~10.00mm(increment:0.01mm)
Corneal power.....33.00~67.00D
(in case that the corneal equivalent refractive power is 1.3375)
Corneal astigmatism.....0.00~15.00D
(Increments0.06/0.12/0.25D)
Axis.....1~180°(increment:1°)
Corneal diameter.....2.01~14.00mm(increments: 0.1mm)

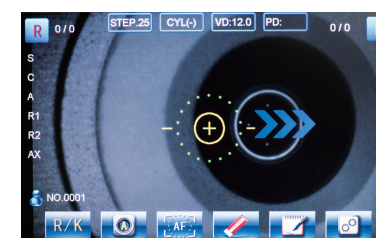
Operation interface function



3D Measuring System



Eye Socket Range



Start instrument, quickly move the device into the measuring area (black part)

Auto Tracking and Focusing



When move the device into the range of the patient's eye socket, it will track down a measuring focus of the eye automatically by the light sensors and 3D mechanism system inside(AF mode)

Auto Measuring



After auto focusing successfully, auto measuring(A mode) is performed. By these performances, an inexperienced user can also complete the measurement perfectly

YZ-38 KERATOMETER

SPECIFICATIONS

Magnification of Eyepiece.....	15X
Total Magnification.....	18X
Illumination.....	2X 6V/12W halogen bulb
Measurement Range:	
Radius of Curvature.....	5.5~1.1mm
Diopter.....	30~60Dpt
Reading Increment(radius).....	0.02mm
Measuring Accuracy.....	0.25Dpt
Compensation Refractive index n.....	1.3375
Minimum Surface required.....	r=5.5 Φ1.65 r=7.5 Φ2.3
For measurement.....	r=11 Φ4.00(mm)
Angle Measuring Disc.....	0°~180°
Input Voltage.....	110V/220V



FDA

YZ-23B SYNOPTORPHORE

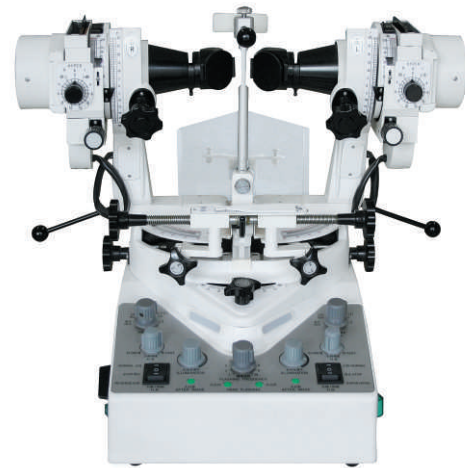
YZ-23B Synoptophore is a diagnostic and remedial equipment combined with optical, mechanical and electrical parts. It can be used to diagnose and treat binocular functions, such as strabismus, amblyopia, diplopia, heterophoria, etc.

CHARACTERISTICS

- Combined with functions of diagnosis, treatment, simultaneous viewing, syncretic viewing, solid viewing, and afterimage.
- Equipped with a pair of Haidingers Brush, 20 pairs of pictures with different angle.
- Advanced semi-transparent and semi-reflecting viewfinder is convenient for the oculists to observe.
- Advanced LED luminophor with even light, low thermal and long span.
- The pictures adopt new design and are anti-broken, long span.
- Manual or automatic coruscation at doctor's option and accurate frequency.

SPECIFICATIONS

Magnification.....	1.65X
Diameter of visual field.....	≥56mm
Red light wavelength.....	λ=640nm
Left and right tubes around erect axis.....	Concourse 50°, radiation 40°
Left and right tubes around horizontal axis.....	±30°
Pictures of left and right can be moved up and down according axis.....	±10Δ
Pictures of left and right can be moved up and down around optical axis.....	±20°
Adjustable range of pupil distance.....	45~75mm
Darkroom illumination.....	LED luminophor with symmetry design
Adjustable haidingers brush.....	50~100 round/minute
Coruscation form.....	manual or automatic
Automatic coruscation frequency.....	ten-step, 30-300times/minute
Range of automatic coruscation(each cycle).....	1/4 on 3/4 off, 1/2 on 1/2 off, 3/4 on 1/4 off
Type of automatic coruscation.....	One on and the other off. One on or off while the other can be turned on or off
	The left and right can be turned on or off at the same time.
	The left and right can be turned on or off alternatively.
Whole packing volume.....	0.256CBM
Carton number.....	1
G/weight.....	40kgs



FDA

S390L DIGITAL SLIT LAMP

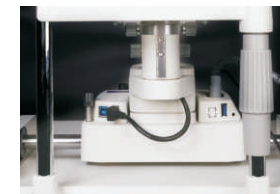
Built-in Digital Image System with professional photo and video

FEATURES

- The design was inspired from the shape of firefly. The smart design largely saves space for clinicians compared other bulky camera system
- We have preset many camera parameters so the user does not need to adjust settings before using the device. The user can operate the machine immediately once the installation has been finished.
- The device has the following automatic functions for photo shooting and processing when equipped with our software: Auto Focus(During setup), Auto Exposure, Auto Gain, Auto White Balance, Auto OS/DS Indicator



Quick Capture Button



Fewer Cables with Extra USB port

SPECIFICATIONS

Microscope

Microscope type.....	Galilean Type
Magnification change.....	Five position revolving drum
Eyepieces.....	12.5X
Angle between eyepieces.....	13°
Total magnification(Field of view)....	40X (5.5mm), 25X (8.5mm), 16X (13.5mm), 10X (22mm), 6X (34.7mm)
Pupillary adjustment.....	52mm~78mm
Diopter adjustment.....	±6D

Slit Illumination

Slit width.....	Continuously variable from 0 to 14mm (slit becomes a circle at 14mm)
Slit length.....	Continuously variable from 1mm to 14mm
Aperture diameters.....	Ø14mm, Ø10mm, Ø5mm, Ø3mm, Ø2mm, Ø1mm, Ø0.2mm
Slit angle.....	0°~180°
Slit inclination.....	4 steps: 5°, 10°, 15°, 20°
Filters.....	heat-absorbing, ND, Red-free, cobalt blue
Lamp.....	3V LED Module
Intensity of illumination.....	≥60KLX

Power

Input voltage.....	100-240V, 50Hz/60Hz ±10%
Power consumption.....	10VA
Back ground illumination.....	LED 6V
Fixation light.....	LED 3V

Capture system

Built-in image sensor.....	5 mega pixels
Photo resolution.....	2592X1944 pixel
Video resolution.....	1280X960, 25fps
Focus mode.....	Auto Focus
Exposure Mode.....	Automatic exposure, Automatic gain
Transmission interface.....	USB 2.0 High-speed 480Mbps port



Digital capture module with beam splitter



Adjustable Aperture

CE FDA

Software Features

Our software is the image management system to help clinicians management patient records and images capture by Firefly. By showing patients the anterior segment images and pointing out pathologies, clinicians can educate patients and gain their trust.

Convenient Patient Management

The patient management system enable clinicians to build and edit patient record, search information by inputting key words. Clinicians can easily record symptoms and manage the data all the time. The software supports DICOM which makes the images captured by Firefly be easily integrated into hospital's medical system

Functional Image Analysis

Clinicians can measure the pathology area with our powerful software tools and change the contrast and brightness of the images. Clinicians can also compare several images at one time to analyze the symptoms and pathology.

Orthokeratology Lens Fitting Assistance

The optometrists can capture and record high resolution fluorescein images of lens fitting and real-time video without a recording time limit. By comparing the different lens fitting effects, the photos optometrists can show and educate patients which lens is most suitable for them.

Customized Auto Exposure Value Setting

Clinicians can customize auto exposure values according to the image demand and save as templates for future capturing purpose. Also, the printing report can be customized according to clinician's need

YZ-5F1 SLIT LAMP

5 STEPS

FEATURES

The optical lens is made of glass which imported from Germany.
All the lens are multi-coated, mildew-proof and anti-reflection.
All the adaptors are universal.

SPECIFICATIONS

Type.....Galilean type drum
Magnification.....Five-step drum magnifications
Eye piece.....12.5X
Total Magnification.....6X(Φ33mm),10X(Φ22.5mm),16X(Φ14mm),
(Diameter of Visual Field) 25X(Φ8.8mm),40X(Φ5.5mm)
Diopter Adjustment.....-5D~+3D
Slit Height.....1mm~8mm continuously adjustable
Slit Width.....0mm~9mm continuously adjustable
Light Spot Diameter.....Φ9,Φ8,Φ5,Φ3,Φ2,Φ1,Φ0.2(mm)
Slit Angle.....0~180°
Slit Inclination.....5°,10°,15°,20°
Filter.....heat absorption, grey, redfree, cobalt blue
Input Voltage.....110V/220V, 60/50Hz
Input Power.....58W
Illumination Bulb.....12V 30W halogen bulb
Fixation Bulb.....(red) LED
Whole Packing Volume.....0.18CBM
G/Weight.....25kgs



POWER BOX



CE FDA

YZ-5J SLIT LAMP

2 STEPS

FEATURES

The optical lens is made of glass which imported from Germany.
All the lens are multi-coated, mildew-proof and anti-reflection.
Two step magnifications, 10X, 16X for choice.

SPECIFICATIONS

Microscope Type.....Converging stereoscope
Magnification.....two-step magnifications
Eye piece.....10X
Total Magnification and field of View(mm).....10X(Φ18),16X(Φ14.5)
Range of Pupil Distance(mm).....55~82
Adjustment of Diopter.....±6D
Slit Width(mm).....0~9 adjustable
Slit Height(mm).....1~8 adjustable
Slit Angle.....0~180°
Light Spot Diameter (mm).....Φ9,Φ8,Φ5,Φ3,Φ2,Φ1,Φ0.2(mm)
Filter.....heat absorption, grey, redfree, cobalt blue
Illumination Bulb.....12V/30W halogen bulb
Input Voltage/frequency.....AC220V ± 10%/50Hz ± 1Hz,
AC110V ± 10%/60Hz ± 1Hz,
Input Power.....58W
Electrical Safety Standard.....Conform to Standard
IEC 601-1.Class 1 Type B
Whole Packing Volume.....0.18CBM
G/Weight.....24kgs



POWER BOX



CE FDA

YZ-5S DIGITAL SLIT LAMP

FEATURES

It has built-in beam splitter and digital camera adaptor.
The digital camera should be CANON DSLR.
It covers all the functions and characteristics of YZ-5F1 with big light spot.
It has background illumination system.
Photos can be taken by the button on the joystick.

OPTIONAL ACCESSORIES

R style or T style tonometer
Measurable ocular
Trihedron lens
Anterior chamber angle lens (single side lens or four sides lens)
Eyeground contact lens
Aspheric surface lens.

CAMERA RECOMMENDED SETTING

STEP 1) Turn the <Mode dial> to <M>.
STEP 2) Set the shutter speed 1/10 to 1/30 sec
STEP 3) Image-recording quality select <M>.
STEP 4) ISO setting: select ISO speed "ISO 800" at least
STEP 5) White Balance: select "Tungsten"



The camera should be Canon DSLR camera (EOS digital) like EOS700D/750D/800D

CE FDA

YZ-5T ANALYZE DIGITAL SLIT LAMP

This image processing system is not only a working platform for ophthalmic diagnosis, but also a case database.
It can easily capture digital photos of the cornea, sclera, anterior chamber, iris, lens, retina and set up patients files and effectively manage them

FEATURES

- What doctors see from eyepieces is showed synchronously on camera display screen, which is very convenient for the doctors to capture the best and clearest pictures.
- Photos taken by the 17.9 megapixel camera.
- Background illumination specifically designed for darkroom environment.
- Fine photos immediately taken by the button on joystick.
- Used for establishing the full data of patients, processing images, measuring the length, area and so on.
- Famous for its excellent optics.



CE FDA

YZ-5T = YZ-5S + software

YZ-5X1 SLIT LAMP



YZ-5X SLIT LAMP



CE FDA

SPECIFICATIONS

Microscope

Item no.	YZ-5X1	YZ-5X
Type	Galileo magnification changer with converging	Converging stereoscope
Model of magnifying	5 steps by drum rotation	Two-step magnifications
Eyepiece	12.5 X	10 X
Total magnification rate (Field-of-view)	6X(Φ33mm), 10X(Φ22.5mm), 16X(Φ14mm), 25X(Φ8.8mm), 40X(Φ5.5mm)	10X(Φ18mm), 16X(Φ14.5mm)
Range of P.D. Adjustment	55mm to 75mm	55mm to 82mm
Diopter adjustment	-5D to +3D	±6D

For both YZ-5X1 & YZ-5X:

Illumination

Slit projection magnification.....1.16X
 Slit width.....continuous from 0mm to 14mm (become a circle at 14mm)
 Slit height.....continuous from 1mm to 14mm
 Aperture diameter.....14mm, 9mm, 5.5mm, 0.3mm
 Slit angle.....0° to 180° continuously adjustable from vertical to horizontal
 Filter piece.....Heat-absorbing, red-free, blue
 Illumination bulb.....6V 20W halogen bulb

Dimension and weight

Packing box.....720mm X 495mm X 480mm
 Total weight.....23kgs
 Net weight.....17kgs

Chin-rest parts

Vertical movement.....80mm
 Fixation target.....Red LED

Movement base

Fore and back movement.....90mm
 Left and right movement.....100mm
 Fine movement.....15mm
 Vertical movement.....30mm

Power source

Input voltage.....AC110V/220V±10%
 Input frequency.....50/60Hz
 Input power.....30VA
 Output voltage.....Illumination bulb 4V, 5V, 6V/Fixation target 6V
 Electric safe standard.....Conform to Standard IEC601-1, Class I Type B

HSL-01 HAND-HELD DIGITAL SLIT LAMP

- First portable digital slit lamp
- High definition and stable image
- Auto focus
- 3.97 inch touch screen

It's a portable medical camera for anterior segment imaging, diagnosis and especially for anterior disease screening.

It's compact, easy to obtain high definition images.

It can be conveniently applied to rapid screening, out diagnosis, bedside diagnosis and remote medical treatment, etc.

FEATURES

- Images real-time display, 10 times magnification
- High definition imaging
- Internal capacity 16GB
- USB and WiFi connection
- Low weight 850g, movable and portable
- Rechargeable battery provides up to more than 4 hours of continuous operation
- 3.97 inch TFT-LCD touch screen

SPECIFICATIONS

Magnification.....10X
 Working distance.....80mm
 Refractive compensation.....-7D ~ +7D
 Slit width0~12mm continuously adjustable
 Aperture diameter.....0.2mm, 1mm, 5mm, 12mm
 Filter.....Heat-absorption, Grey, Red-free, Cobalt blue
 Light source.....White LED
 Image resolution.....16MP
 Focus Mode.....Auto
 Screen.....3.97 inch touch screen
 Storage.....Internal capacity 16GB
 Power supply.....Lithium Battery 3.7V 3400mAh
 Interface.....USB/WIFI/BT/4G
 N. Weight.....850g
 Size.....140x118x225mm
 Packing size.....36x28x26cm



CE FDA



KJ-5S1 HANDHELD SLIT LAMP

SPECIFICATIONS

Microscope type.....Binocular Crossed Stereoscope
 Eyepiece.....10X, 16X
 Objective Magnification.....1X
 Diameter of Light Spot.....1mm, 3mm, 5mm, 10mm
 Pupil Distance.....48mm to 70mm
 Adjustable Diopter.....-7D to +7D
 Working Distance.....80mm
 Slit width.....0~10mm adjustable
 Slit height.....1~10mm adjustable
 Slit Angle.....horizontal± 30°
 Filter.....Heat-absorption, Grey, Redfree, Cobalt blue
 Illumination Bulb.....white LED
 Power.....7.2V, Lithium Battery, Rechargeable
 Working Time.....5-6 hours
 Packing volume.....40x20x23cm
 Net weight.....750g
 Gross weight.....2600g

Standard Configuration

Carrying case(1pc) , Battery(2pc), Battery Charger(1pc),
 Forehead support(1pc), Diopter adjustment bar(1pc),
 16x Eyepiece (1pair), 10x Eyepiece (1pair)



YZ-30 APPLANATION TONOMETER

SPECIFICATIONS

Measurement Range.....0~10.64Kpa
 Light Ring Displacement.....1.53X2=3.06mm
 Diameter of the testing head.....7mm
 Average Error±70pa
 Type.....R type/T type



Three Prism Head **B2101** as standard accessory



Applanation Tonometer(R type)
For YZ-5F1, YZ-5J, YZ-5S



CE FDA



Applanation Tonometer(T type)
For YZ-5F1, YZ-5J, YZ-5S

ACCESSORIES OF SLIT LAMP

OPTIONAL for YZ serie slit lamp

BEAM SPLITTER & ADAPTOR



B1131

Beam Splitter(90° type)
for digital camera

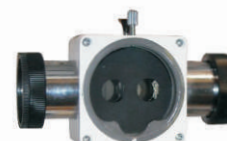


B1133

C-mount Adaptor suitable for
CANON EOS series EF mount



Assembled combination



B1132

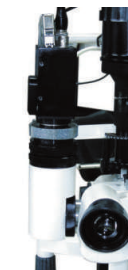
Beam Splitter(180° type)
for video



B1134 1/2" CCD Adapter

B1135 1/3" CCD Adapter

Assembled combination



B1346

Adaptor for
teaching tube



B1136

Teaching Tube



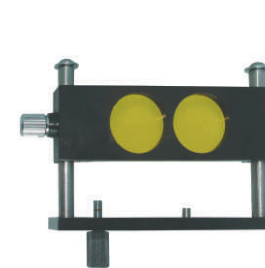
B1124

Diffusion Lens



B1125

Hruby Lens



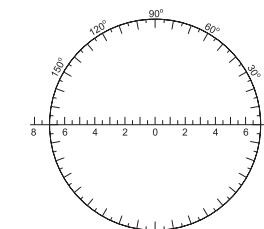
B1122

Yellow Filter



B1123

Measuring Eyepiece



Goldmann lens



B1126

Eyeground
contact lens



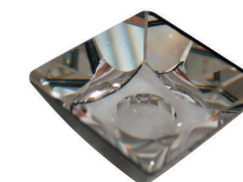
B1127

Anterior chamber angle
lens-single side lens



B1128

Trihedron lens/3 mirror lens



B1129

Anterior chamber angle
lens-four side lens

MP-500 PHOROPTOR

SUPER SMOOTH HANDFEELING

FEATURES

- All the lens are anti-reflection coated.
- All Cross-Cylinder lens are Manus lens.
- Fingertip adjustment for sphere power control.
- Measuring astigmatism
- Cross cylinder ($\pm 0.25D$)
- Rotary prism
- Unique new convergence system mechanism
- Wide range of auxiliary lens combinations
- Precision machined to finest tolerances
- Net weight: 5kgs
- Dimension: 318 X 315 X 90mm



CE FDA

Cylinder mark: 15° scale is optional

SPECIFICATION

Sphere powers range.....+16.75D to -19.00D, with minimum reading 0.25D or 0.12D
(when +0.12D auxiliary lens or optional $\pm 0.12D$ lens is in use)
+26.75D to -29.00D (when optional $\pm 10.00D$ lens is in use)

Cylinder powers range.....0 to -6.00D, with mini reading 0.25D or 0.12D(when auxiliary lens is in use
0 to -8.00D (when -2.00D auxiliary lens is in use)

Astigmatic axis scale.....0 to 180° in 5° steps

Cross cylinder..... $\pm 0.25D$, reversal type, $\pm 0.50D$ optional

Rotary prism.....0 to 20 Δ D in 1 Δ D step

Interpupillary adjustment.....48mm to 80mm in 1mm step (right and left synchronized)

Forehead rest adjustment.....16mm backward and forward

Convergence.....The optical axes of the lenses are aligned at a distance of 400mm from the vertexes of the corneas
(2mm each for right and left inward) Interpupillary distance enabling convergence = 57mm to 80mm

Corneal distance device.....2mm forward and 5mm backward from standard plane; with scale

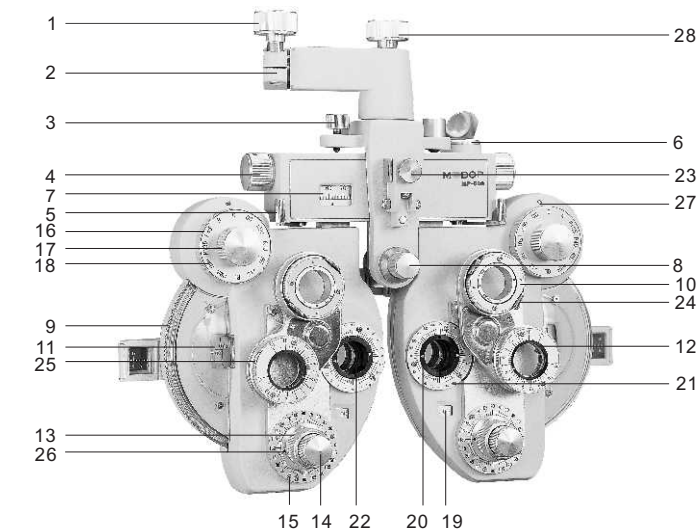
Effective field of view.....19mm

AUXILIARY LENS

Right eye	Left eye
O (Open aperture) OC (Occluder) $\pm .50$ (Fixed cross cylinder)	
6 Δ U (6 prism diopter base up)	10 Δ I (10 prism diopter base in)
PH (Pinhole) +.12 (+0.12D sphere lens)	
RL (Red filter) RMH (Red maddox rod, horizontal) RMV (Red maddox rod, vertical)	GL (Green filter) WMH (White maddox rod, horizontal) WMV (White maddox rod, vertical)
P45° (Polarizing filter, axis 45°) P135° (Polarizing filter, axis 135°) R (Retinoscopic lens. +2.00D, for 50cm)	



Black color is optional



1. Locking knob
2. Clamp bracket
3. Leveling knob
4. Interpupillary adjustment knob
5. Convergence lever
6. Level
7. Interpupillary scale
8. Forehead rest adjusting knob
9. Sphere power control ring
10. Cross cylinder
11. Sphere power reading window
12. Rotary prism
13. Cylinder lens axis control ring
14. Cylinder lens power control knob
15. Cylinder lens axis scale
16. Sphere power rapid feed dial
17. Auxiliary lens control knob
18. Auxiliary lens symbols
19. Astigmatism scale
20. Cylinder lens axis index
21. Cylinder lens axis scale
22. Accessory lens pinhole
23. Near point scale receiver
24. Cross cylinder rotating knob
25. Rotary prism knob
26. Astigmatic axis index
27. Auxiliary lens mark
28. Rotate tighten knob

ACCESSORIES:



Near Point Holder



Rotating Near Point Chart



Near Point Rod



Auxiliary Lenses(-0.12C/-2.00C)



Face shield

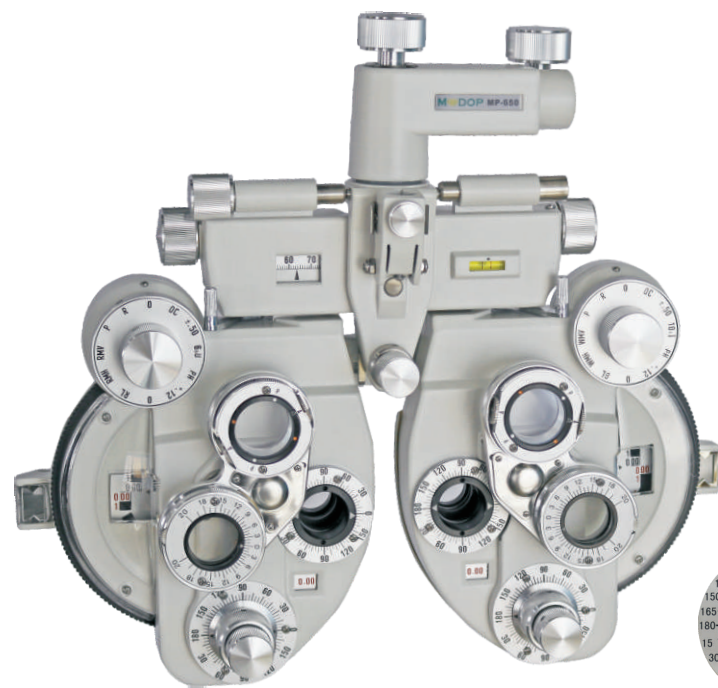


Rotating Near Point Set

MP-650 PHOROPTOR

FEATURES

- It's a new generation of phoropter reference the foreign similar produce.
- This equipment use the comprehensive centralized operation and large dial.
- Improve the operating performance.
- The cross cylinder is auto connecting with the cylinder lens coordinate.
- Build-in astigmatic lens and axis knob are synchronism linkage.
- Settle the axis and astigmatic examine at one go.
- Build-in various auxiliary lens. Overall check the ophthalmic function.



CE FDA



Black color is optional

Cylinder mark: 15° scale is optional

SPECIFICATIONS

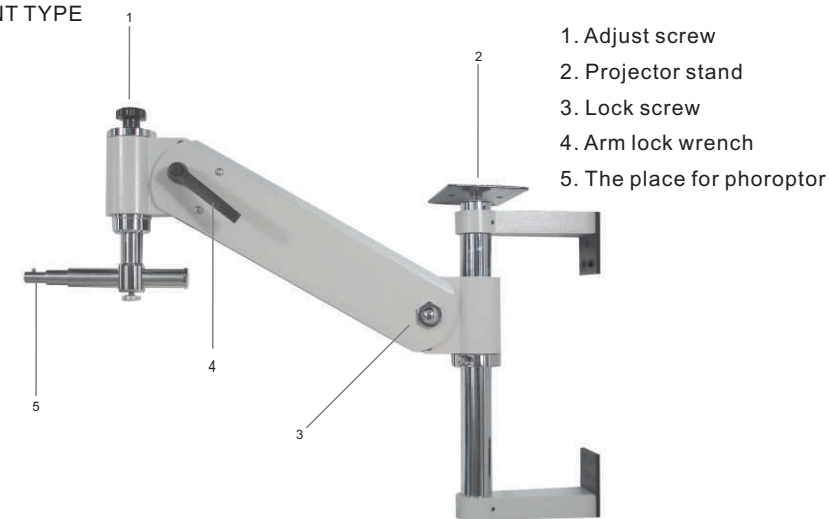
Sphere powers range.....	+16.75D to -19.00D, with minimum reading 0.25D or 0.12D (When +0.12D auxiliary lens or optional +/-0.12D lens is in use) + 26.75D to -29.00D(When optional +/-10.00D lens is in use)
Cylinder powers range	0.00D to -6.00D, Step:0.25D or 0.50D(Whenlens auxiliary is in use) 0 to -8.00D (when -2.00D auxiliary lens is in use)
Astigmatic axis scale.....	0° to 180°, Step:5°
Cross cylinder.....	+/-0.25D or +/-0.50D optional
Rotary prism.....	0 to 20△ D in 1△ D
Interpupillary adjustment.....	48mm to 75mm in 1mm step (right and left synchronized)
Forehead rest adjustment.....	16mm backward and forward
Convergence.....	The optical axes of the lenses are aligned at a distance of 400mm from the vertexes of the corneas (2mm each for right and left inward) Interpupillary distance enabling convergence=51mm to 80mm
Corneal distance device.....	2mm forward and 5mm backward from standard plane
Effective field of view.....	19mm

PA-5 PHOROPTOR ARM

WALL MOUNT TYPE

SPECIFICATION

Up/Down angle of arm: $\pm 30^\circ$
 Rotate angle of arm: 180°
 Max weight on arm: 10kgs
 Max weight on projector stand: 12kgs



PTA-5 PHOROPTOR ARM

TABLE STAND TYPE

FEATURES

Simple and easy to assemble.

SPECIFICATION

Base.....	42 X 28cm
Height.....	75cm
Light.....	white LED
Net weight.....	8.5kgs



FA-6 PHOROPTOR ARM

FLOOR STAND TYPE

FEATURES & SPECIFICATIONS

Up/Down angle of arm: $\pm 30^\circ$
 Rotate angle of arm: $\pm 32.5^\circ$
 Input voltage: 110V/220V AC60Hz/50Hz
 Light luminaire: 36W
 Working temperature: $-30^\circ\text{C} \sim +50^\circ\text{C}$
 Relative humidity: less than 90%

INSTALLATION DIMENSION

Size: 600(L)X745(W)X2063(H)mm
 Weight of base: 30kgs
 Total weight: 60kgs

CV-7200 AUTOMATIC PHOROPTOR

COMPUTERIZED

FEATURES

- 7.0-inch color LCD touch screen
- Stylish and compact design
- Auto detachment printer
- Independent PD adjustment
- Built-in LED for near vision illumination
- Data transmission with auto refractometer and auto projector

SPECIFICATIONS

- Sphere.....-19.00~+16.75D (0.25D/0.5D/1.00D/3.00D steps)
 Cylinder.....-6.00D~+6.00D 0.25D steps
 Axis angle.....0~180°(1°/5°steps)
 Pupil Distance.....Distant range 52~80mm
 Close range 48~76mm 0.5/1mm steps
 Rotary Prism.....0~20Δ 0.1/0.5/1.0Δ steps
 Cross Cylinder Lens.....±0.25D
 Retinoscope.....+1.5D(67cm),+2.00D(50cm)
 Auxiliary Lens.....PH,Binocular(Ø=1.0mm)
 RMV, RMH
 RL(Right eye), GL(Left eye)
 Polaroid (Right eye 135°/145°,Left eye 45°/135°)
 Prism (Right 3ΔBU, 6ΔBU),(Left 3ΔBD, 10ΔBI)
 Cross Cylinder Lens (±0.5D Axis=90°)
 PD Lens

- Phoropter Size.....365mm x 280mm x 110mm 3.8kg
 Keyboard Size.....230mm x 195mm x 190mm 1.2kg
 Power Box Size.....236mm x 126mm x 115mm 2.1kg
 Power Supply.....AC220V 50Hz or AC110V 60Hz, 90W

STANDARD LAYOUT: Automatic phoropter & Junction Box and Control keyboard



Automatic phoropter



Junction box



Control keyboard

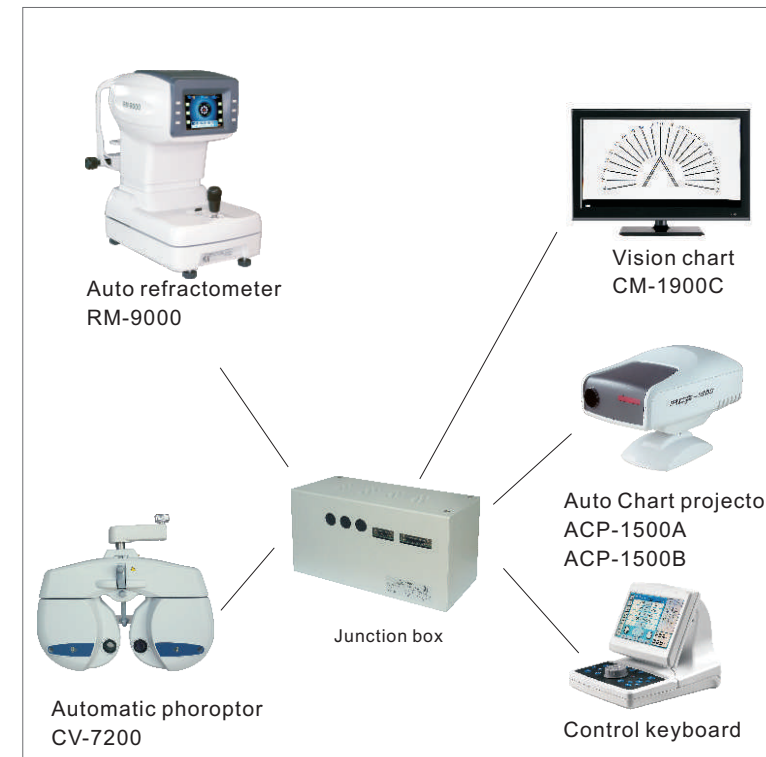


CE FDA



control keyboard & printer

NETWORK POSSIBILITY



With the data output cable, the auto refractometer RM-9000 can be connected with the following machines by the junction box to form a network.

Automatic phoropter CV-7200

Keyboard of CV-7200

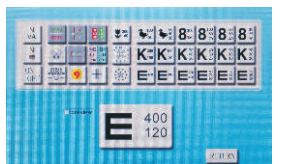
Vision chart CM-1900C

Auto chart projector ACP-1500A/ACP-1500B

The measured results from the auto refractometer RM-9000 can be sent to the junction box, and the shared data will show on the screen of the keyboard. These data can be used easily for further examination.



Decimal type



Snellen type

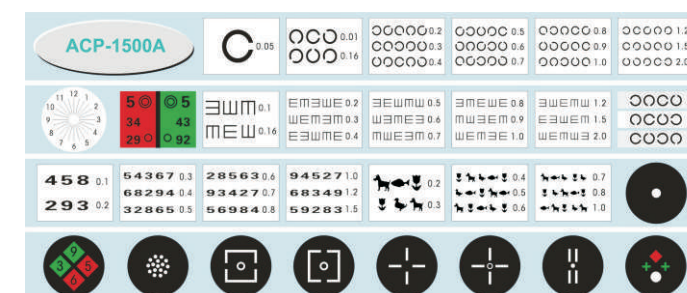
ACP-1500 AUTO CHART PROJECTOR

white LED lamp

SPECIFICATIONS

- Projection distance.....1.5~7 meter
 Projection magnification.....30X(at 5m)
 Projection size.....330x270mm(at 5m)
 Chart switching speed.....0.01~0.02S
 Mask number.....1 open,5 horizontal lines,8 vertical lines,
 21 single letters,1 red/green
 Program.....2 sets programs,
 each program contains up to 30 steps
 LED Lamp.....12V,10W
 Power source.....AC 220V,50Hz or 110V,60Hz
 Power consumption.....80W
 Dimensions.....320mmX218mmX240mm
 Net weight.....7.2kgs

A chart ACP-1500A



B chart ACP-1500B

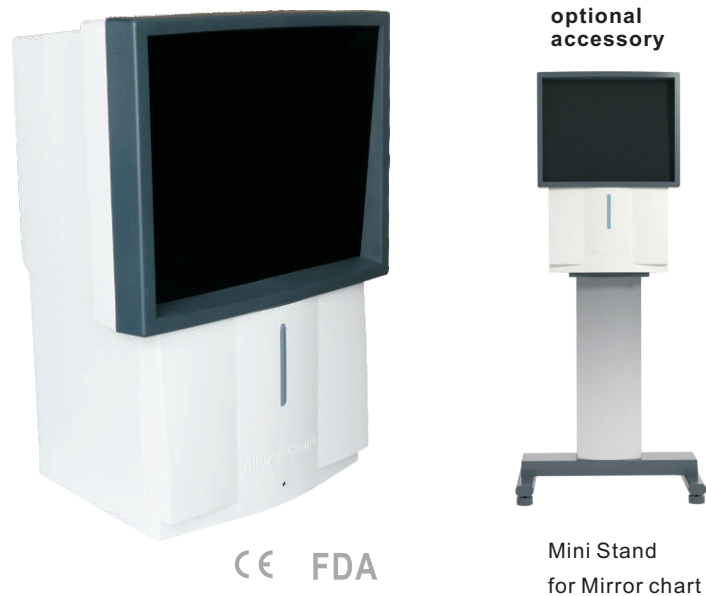


CE FDA

ACP-100 MIRROR CHART

SPECIFICATIONS

Charts.....	32 Visual targets
Selection Speed.....	Average 0.45 sec
Projection distance.....	1.1m
Auto-off function.....	5 minutes
Lamp.....	12V/35W
Power source.....	Main body: AC110V/AC220V 50/60Hz Remote control:DC9V
Power consumption.....	50VA
Dimensions.....	Main body: 400X280X560mm Remote control:248X70X18mm
Net weight.....	Main body: 20kgs Remote control: 0.22kg



NV-100 NEAR VISION TESTER

FEATURES

The refractive tests include:

- Measurement of visual acuity using Snellen letter and illiterate E-chart,and Times Roman reading types.
- Accurate determination of presbyopic additions and other near corrections.
- Near vision astigmatism tests.
- Amplitude of accommodation including monocular measurements under binocular conditions.

The Binocular balance tests include:

- Fixation disparity test for uncompensated heterophoria motor eye dominance. Accommodation-convergence relationship.
- Quantitative evaluation of foveal suppression in heterophoria patients.
- Near point of convergence.
- Targets for subjective cover tests for heterophoria and harmonious ARC.

SPECIFICATIONS

Test Distance.....	36cm
Distant Control.....	60cm
Size.....	220(H)×210(W)×42(D)mm
Weight.....	780g
Power Supply.....	LR6 AA/1.5V×3

The NV-100 near vision tester enable a complete refractive and binocular vision investigation to be carried out with the head and eyes in their normal posture at any working distance. It's in English. But French and Dutch version are also available.



NEAR VISUAL ACUITY CHART

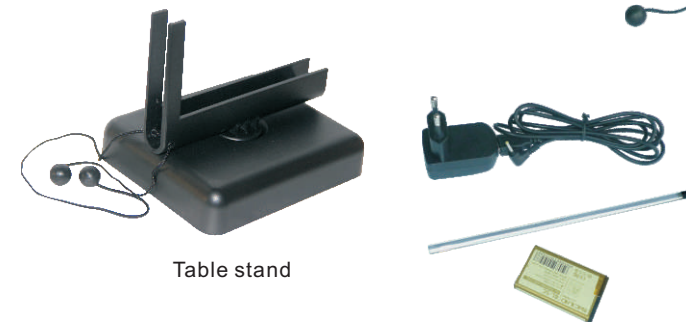
FEATURES

- Double side display(2 charts). Amsler grid is the standard chart for the other side.
- 1100mAh rechargeable Li-ion battery offer longer working hour.
- The angle of the base can be adjusted.

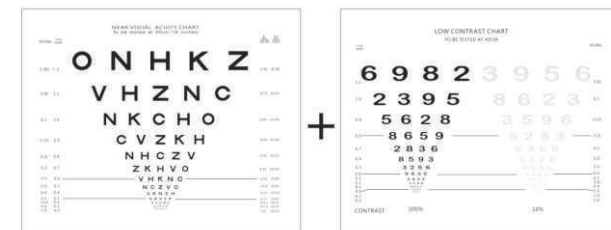
SPECIFICATIONS

Test distance.....	30cm to 40cm
Dimension.....	196X145X10mm
Power supply.....	AC adaptor, rechargeable Li-ion battery

STANDARD ACCESSORIES:



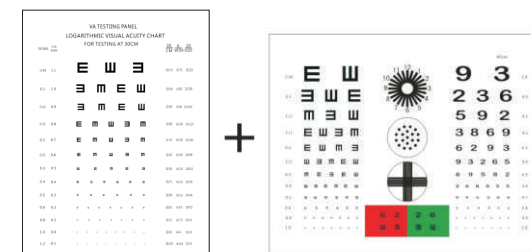
More charts of near vision chart



Letter chart

Low contrast

NV-194



E chart

E and function chart

NV-191

LED lamp

Vertical chart

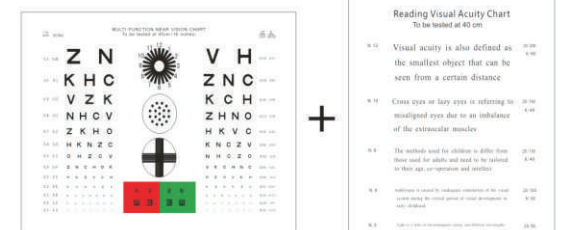
Lateral chart



NV-195

NV-145

AMSLER GRID
back side of NV195
and NV 145



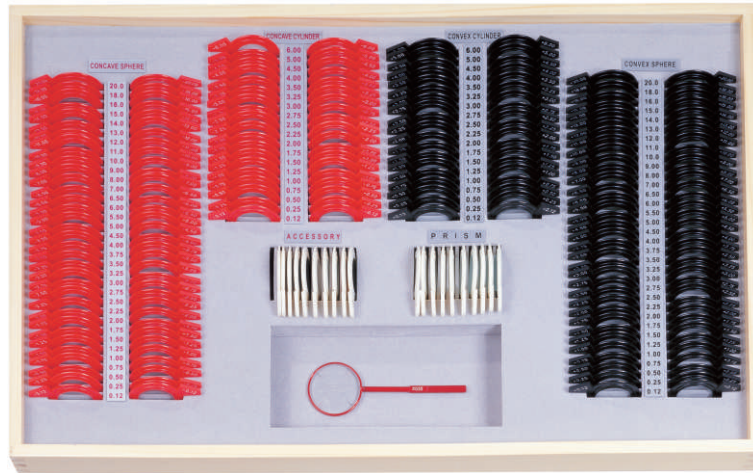
Letter and function chart

Reading chart

NV-134

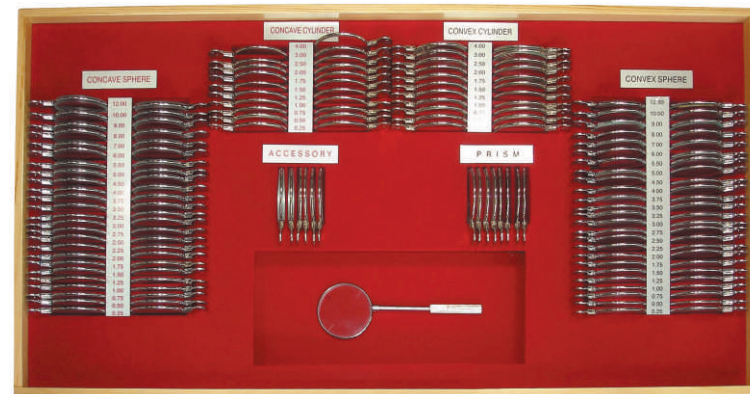


DW TRIAL LENS SET



CE FDA

DW158P.....158 pcs, Colored Plastic Rims
DW232P.....232 pcs, Colored Plastic Rims
DW260P.....260 pcs, Colored Plastic Rims



CE FDA

DW158M.....158 pcs, Shiny Metal Rims
DW232M.....232 pcs, Shiny Metal Rims
DW260M.....260 pcs, Shiny Metal Rims



CE FDA

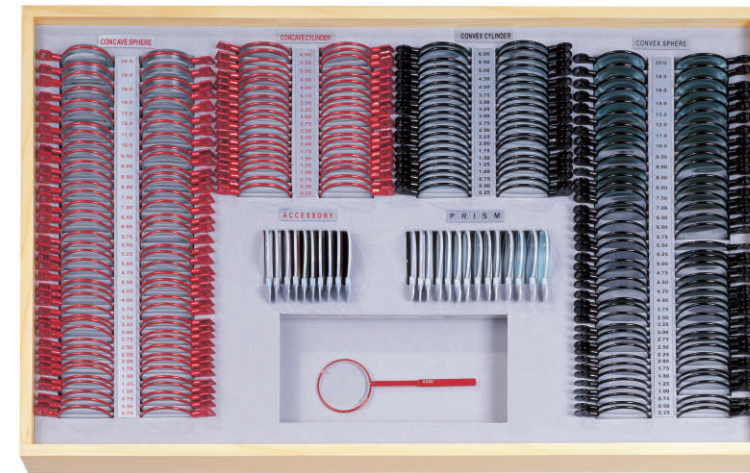
DW158AL.....158 pcs, Colored Aluminum Rims
DW232AL.....232 pcs, Colored Aluminum Rims



CE FDA

DW158PN.....158 pcs, Colored Plastic Rims
DW232PN.....232 pcs, Colored Plastic Rims
DW260PN.....260 pcs, Colored Plastic Rims

DW TRIAL LENS SET



CE FDA

DW158MC.....158 pcs, Colored Metal Rims
DW232MC.....232 pcs, Colored Metal Rims
DW260MC.....260 pcs, Colored Metal Rims



ALUMINUM-ABS CASE



ALUMINUM-LEATHER CASE

WB-1106E PROGRESSIVE LENS SET

SPECIFICATIONS

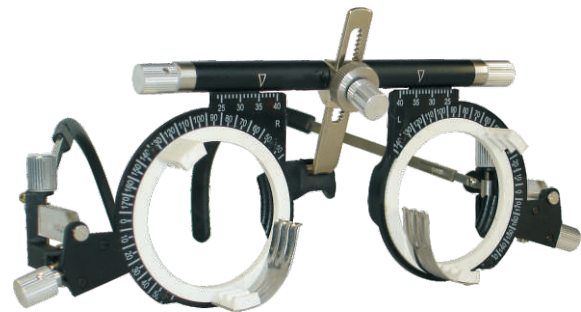
- 1.Progressive lens:+1.00D~+3.50D in 0.25D steps(11pairs lens)
- 2.Corridor of Progressive lens: 12mm
- 3.hand lamp:1pc
- 4.Case: aluminum case



CE FDA

TF-12 TRIAL FRAME

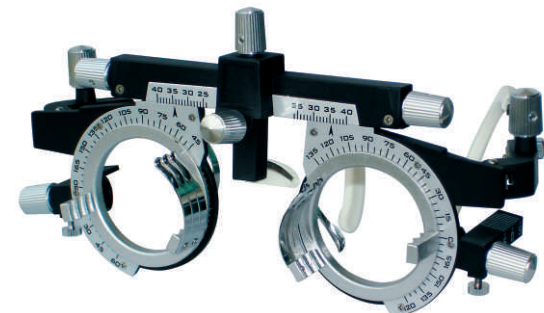
PD Range: 48-80mm



CE FDA

TF-10 TRIAL FRAME

PD Range: 48-80mm



CE FDA

TF-13-48mm TRIAL FRAME FOR KIDS

FIXED PD

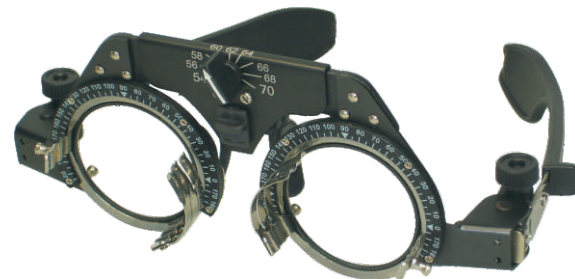
PD range: 48mm



CE FDA

TF-18 TRIAL FRAME PD Range: 48-60mm
TF-19 TRIAL FRAME PD Range: 54-70mm

TITANIUM



CE FDA

TF-13-56mm TRIAL FRAME FOR KIDS

FIXED PD

PD range: 56mm



CE FDA

TF-32 TRIAL FRAME

FIXED PD



PD range: 50mm, 52mm, 54mm, 56mm, pink



PD range: 58mm, 60mm, 62mm, 64mm, blue



PD range: 66mm, 68mm, 70mm, 72mm, grey

TC-1 TRIAL CLIP



CE FDA



CE FDA

Strong metal frame



It has spring piece, hold the trial lens in.

YZ-25B INDIRECT OPHTHALMOSCOPE

WITH POWER CORD

FEATURES

- Illumination adjust button is on the helmet, convenient for doctor
- Advanced optical design, no reflection, wide and clear visual field
- Super light, comfortable
- 20D aspheric lenses

SPECIFICATIONS

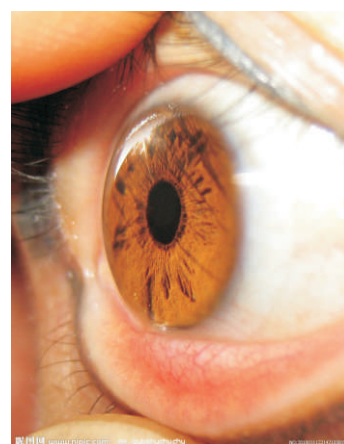
Observation Angle.....	45°±5°
Adjustable Pupil Distance.....	52mm~74mm
Adjustable Range of Head Bracket.....	Head Circumference: 530~630mm, Depth: 85mm~125mm
Illumination Brightness.....	≥500lx
Illumination Source.....	6V/10W, Halogen Bulb
Power.....	AC110V/60Hz; AC220V/50Hz
Dimension(mm).....	142(L)X48(W)X128(H)
Weight of Main Body.....	320g



1. Adjustable locking button and illumination control button ensure comfortable observation angles.
2. Filters and reflection mirror with building in dust-proof device ensure good observation.
3. Filter: Redfree, Cobalt Blue, Compensation Light Spot: big(60mm), middle(40mm), small (20mm, suitable for various pupils).
4. Teaching mirror, double-sided spectroscop ensure the synchronous observation.
5. Two types of smooth iris presser avoid damaging relevant issues.



IRIS PRESSER



CE FDA



ASPHERIC LENS: 20D as standard accessory

YZ-25C INDIRECT OPHTHALMOSCOPE

CORDLESS WITH CHARGEABLE BATTERY

Advanced optical design avoids the glistening and provides the broad field.

FEATURES

- LED bulb(low-temperature, low-pressuer, high-brightness) with long lifetime to make the illumination uniformly and bright. The illumination brightness can be adjusted continuously.
- Imaging clearly, strong dimensional sense and large field of view range. The main body part of this device adopts engineering plastics and is designed to be compact and exquisite.
- Super light weight design, reduce fatigue, operation is very convenient.
- The portable power supply is suitable for surgery, ward round and consultation.
- This device is equipped with color filter, teaching mirror and sclera depressor to be more handy in operation.

SPECIFICATIONS

Adjustable Pupil Distance.....	52mm~74mm
Headband.....	Head Circumference: 520~640mm Depth: 85mm~125mm
Illumination Brightness.....	≥500lx, continuous adjustment
Light spots.....	big(60mm), middle(40mm), small(20mm) suitable for various pupils
Illumination Source.....	LED Bulb
Filter.....	Red-free, white and cobalt blue
Power.....	DC 7.4V, Li+ battery, 15VA AC100V~240V; 60Hz/50Hz, 50VA
Dimension(mm).....	142(L)X48(W)X128(H)
Weight of Main Body.....	230g



CE FDA



F

DM6D RECHARGEABLE OPHTHALMOSCOPE

Complete with 3.5V coaxial ophthalmoscope and Desk charger

SPECIFICATIONS

Illumination source.....3.5V Halogen lamp
 Diopter compensation.....0D, $\pm 1D$, $\pm 2D$, $\pm 3D$, $\pm 4D$, $\pm 5D$, $\pm 6D$, $\pm 7D$, $\pm 8D$,
 $\pm 9D$, $\pm 10D$, $\pm 12D$, $\pm 15D$, $\pm 20D$, $-25D$, $+40D$
 6 standard apertures.....cobalt blue filter, micro spot, small spot,
 large spot, slit, fixation aperture
 2 standard filter..... red-free filter, cross-linear polarizing filter



CE FDA

SR24A RECHARGEABLE STREAK RETINOSCOPE

Complete with 3.5V streak retinoscope and Desk charger

FEATURES

It's designed exclusively to determination of the refraction of the eye.
 The streak retinoscope is found by most practitioners to be easy to use,
 fast, accurate, and especially valuable in determining the axis of
 astigmatism.



CE FDA

DR-1900 RECHARGEABLE DIAGNOSTIC SET

with Ophthalmoscope & Streak Retinoscope

FEATURES & SPECIFICATIONS

Ophthalmoscope

Illumination source.....3.5V Halogen lamp
 Diopter compensation.....0D, $\pm 1D$, $\pm 2D$, $\pm 3D$, $\pm 4D$, $\pm 5D$, $\pm 6D$, $\pm 7D$, $\pm 8D$,
 $\pm 9D$, $\pm 10D$, $\pm 12D$, $\pm 15D$, $\pm 20D$, $-25D$, $+40D$
 6 standard apertures.....cobalt blue filter, micro spot, small spot,
 large spot, slit, fixation aperture
 2 standard filter..... red-free filter, cross-linear polarizing filter

Streak Retinoscope is designed exclusively to determination of the
 refraction of the eye. The streak retinoscope is found by most practitioners
 to be easy to use, fast, accurate, and especially valuable in determining
 the axis of astigmatism.

Multi-coated optics

A single control sleeve for vergence and rotation. Comfortable operation.
 Totally dustproof, maintenance free. Metal handle-for long lasting operation
 Superior streak quality enables easier and quicker refractions-even in
 patients with small pupils. The powerful, bright bulb ensures easy recognition
 of neutralisation. The lowest position gives a divergent beam.



CE FDA

DW-1100 DIAGNOSTIC WALL UNIT(WALL TYPE)

with Ophthalmoscope & Streak Retinoscope

FEATURES

Set complete with:
 3.5V Ophthalmoscope,
 3.5V Streak Retinoscope,
 Wall mount transformer with handles
 Spare part:
 3.5V Spare bulb of 3.5V Ophthalmoscope
 3.5V Spare bulb of 3.5V Oscope



CE FDA

DW-1000 DIAGNOSTIC WALL UNIT

WALL TYPE

FEATURES

Set complete with:
 3.5V Ophthalmoscope,
 3.5V Fiber Oscope,
 Specula dispenser,
 Wall mount transformer with handles
 Spare part:
 3.5V Spare bulb of 3.5V Ophthalmoscope
 3.5V Spare bulb of 3.5V Oscope



CE FDA

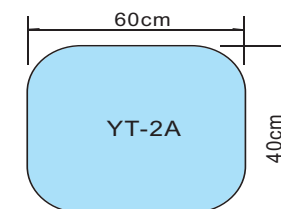
YT-2A POWER TABLE

FEATURES

Its design, functions and quality reach international advanced level
 and it is ideal table for medical, optical and other use, especially
 for slit lamp.

SPECIFICATIONS

Table Size.....60X40cm
 Elevation Range.....640~860mm
 Input Voltage.....AC220V/110V,50Hz/60Hz
 Packing Size.....690mmX580mmX265mm(LXWXH)
 Maximal load.....50kgs



CE FDA

B10 POWER TABLE

FEATURES

- Big size of table top
- Linear motor with low noise
- Strong steel structure base
- Universal brake wheel

SPECIFICATIONS

Lifting height.....	620mm-820mm
Max. load.....	65kgs
Lifting speed.....	13mm/S
Table top.....	640X500mm
Rated power.....	55W
Power supply.....	100-240V, 50/60Hz
Net weight.....	20kgs



CE FDA

COS-430 POWER TABLE

SLIDE TYPE

FEATURES

- Sliding table for two machines
- Strong and stable structure for heavy load

SPECIFICATIONS

Table size.....	90X46cm
Height adjustment.....	700~900mm
Net weight.....	40kgs



CE FDA

COS-100 POWER TABLE

SYMMETRICAL MOTORS

FEATURES

- Big table top with three high-voltage sockets for three machines
- With two high quality symmetrical motors
- 4 different heights can be memorized
- Strong PU mute wheels with break

SPECIFICATIONS

Table size.....	1400mmX640mm
Table elevator height.....	680-973mm
Power input.....	110V 60HZ/220V 50HZ
Net weight.....	61kgs



CE FDA

COS-590 POWER TABLE

FEATURES

- Big table for wheel chair user

SPECIFICATIONS

Table size.....	925mmX615mm
Table elevator height.....	690-900mm
Power input.....	110V 60HZ/220V 50HZ
Net weight.....	40kgs



CE FDA

TC-200 COMBINATION TABLE

MANUAL PHOROPTOR ARM

FEATURES

- Table top can be lifted up and down, it makes the patient feels more comfortable
- Rotary arm with electromagnetic lock.
- With limit switch of table top
- It's fit to both digital phorptor and manual phoroptor
- Big drawer for trial lens set
- Small size and light

SPECIFICATIONS

Size of table top.....	94X55cm
Size of sliding plate.....	42X30cm
Size of drawer.....	53.5X34.5X5.5cm
Rotation angle of rotary arm.....	90°
Rotation angle of sliding plate.....	180°
Tabletop lift range.....	64~94cm
Power.....	110V/60Hz, 220V/50Hz
LED headlamp.....	DC 12V
Net weight.....	65 kg



Drawer for trial lens set



CE FDA



Manual Rotary Arm



With manual phoropter



With automatic phoropter

TR-700A OPTHALMIC UNIT & CHAIR

MANUAL PHOROPTOR ARM

MECHANICAL PARAMETERS

Angle of rotation for rocker.....	±30°
Angle of rotation for table.....	90°
Lifting height for table.....	350mm
Chair rotation range.....	360°
Lifting height for chair.....	150mm
Loading for chair.....	150kg
Lifting height for pillow.....	200mm
Backrest obliquity.....	80°~180°

ELECTRICAL PARAMETERS

Input voltage.....	110V/220V AC 50Hz~60Hz
Motor power.....	55W 24V DC
Lamp.....	5W 110V / 16W 220 AC
Fuse.....	5A 130/250V AC
Power without load.....	1W
Pressure test.....	2KV
Working mode.....	S1
Main wire.....	10A 110V/220V
Working temperature.....	-30°C ~ +50°C
Relative humidity.....	less than 90%
Force of pressing key.....	1~5N
Cooling mode.....	nature cooling



TR-700A-3

TR-700A-3 Stand base with Lower instrument arm, chair EC-700 but without Keratometer arm

TR-700A-4 Same as TR-700A-3 but without chair EC-700



TR-700A-1

TR-700A-1 Stand base with Keratometer arm and Lower instrument arm, chair EC-700

TR-700A-2 Same as TR-700A-1 but without chair EC-700



EC-700 Electrical chair



TC-700 OPTHALMIC UNIT & CHAIR

FEATURES & SPECIFICATIONS

- Small and exquisite, can be used for small room
- Easy operation with a well positioned control panel
- Low voltage output for ophthalmoscope and Retinoscope voltage selectable, 2.5V, 3V, 3.5V, 4V, 6V, 12V
- "Keller" type and "Welch Allyn" type charger are for optional
- Projector mounting plate
- Table and case using composite material

TC-700 Unit

Input voltage.....220V 50Hz/110V 60Hz
Fluorescent lamp.....40W
Table size.....670 X 400mm
Table rotational angle.....90°
Maximum working size.....1400(W)X1450(D)X2150(H)mm
Net Weight (whole unit).....150kgs

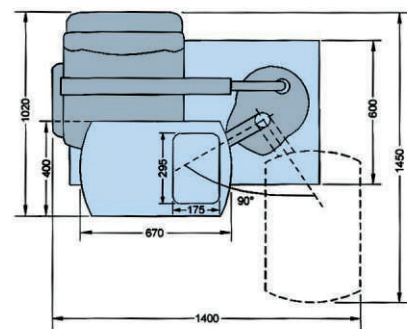
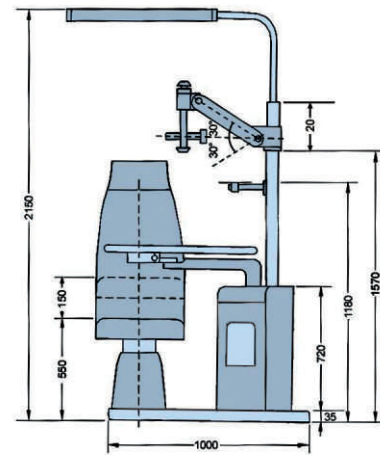
Phoropter Arm

Upward movement.....550mm
Arm rotational angle.....360°

Electrical Chair

Minimum height of seat.....550mm
Maximum height of seat.....700mm
Maximum loading capacity.....150kgs

CE FDA



control panel



- "Keller" type and "Welch Allyn" type charger are for choice.
- Or low voltage output for ophthalmoscope and Retinoscope voltage selectable, 2.5V, 3V, 3.5V, 4V, 6V, 12V

CS-218 COMBINED TABLE

FEATURES

- Fine made, simple & practical, designed for auto phoropter
- Can be equipped with automatic phoropter or manual phoropter, auto refractometer, and trial lens set
- Phoropter arm can be turned 90° automatically when turning the small plate
- LED lamp for the near point chart of phoropter
- Table top can be moved up and down

SPECIFICATIONS

Size of combined table.....1010x581x1485mm
Table top of up and down.....160mm
Size of table top.....930x581mm
Size of tray.....420x300mm
The degree of phoropter arm turning.....90°
The degree of small plate turning.....180°



CE FDA



PRO-5B



PRO-1B

G

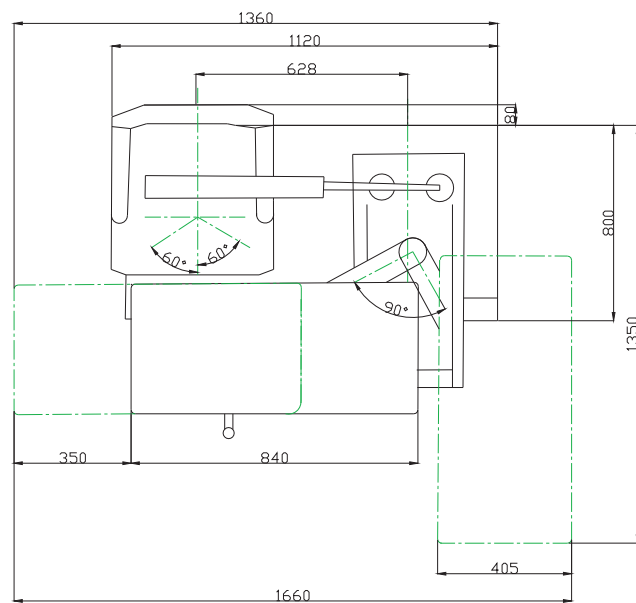
TC-600 OPTHALMIC UNIT & CHAIR

FEATURES & SPECIFICATIONS

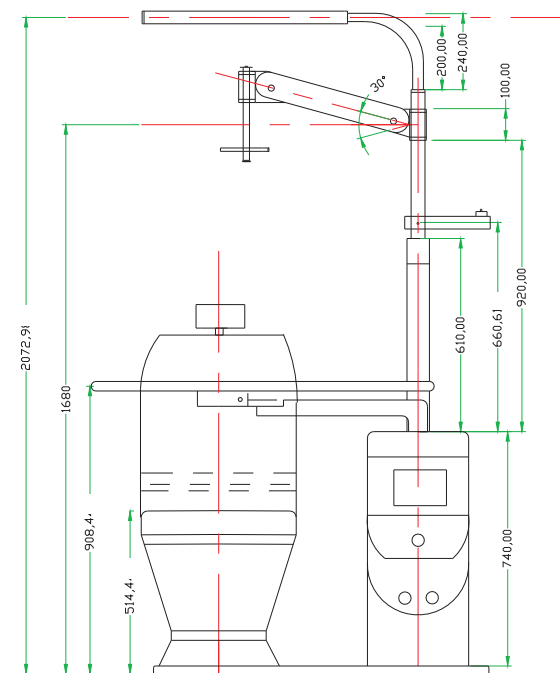
Base size.....39inch x 32inch (1000mm x 800mm)
 Tabletop size.....33inch x 16inch (840mm x 405mm)
 Sliding table to accommodate two instruments
 Auto "power off" for table instruments.
 Table instrument voltage selectable: 6V and 12V)
 Auxiliary 110V/220V output under table
 Three rechargeable wells
 Counterbalanced Refractor Arm
 (a) Adjustable Load Range: 8lbs to 20 lbs. (3.6kgs to 9kgs)
 (b) Vertical Adjustment Range: 12inch (405mm)
 Table rotate angle.....90°
 Chair rotate.....±90°
 Recline angle of chair.....165°
 Chair height.....20inch ~ 25inch (500mm ~ 640mm)
 Adjustable range of headrest.....4inch (100mm)
 White LED lamp.....10 W, brightness is adjustable
 Voltage.....110/220V. (Switch voltage freely.)
 Gross weight.....485lbs (220kgs)



Optional chair color: Beige-white



CE FDA



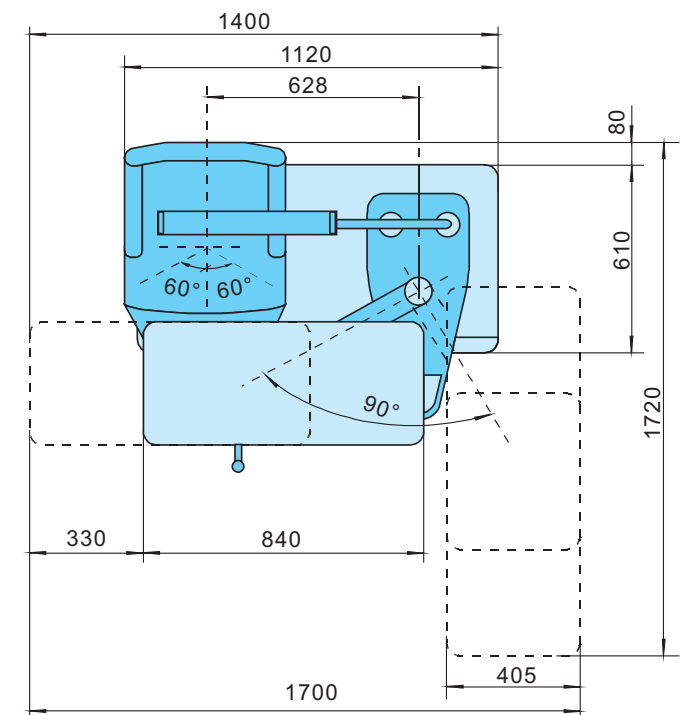
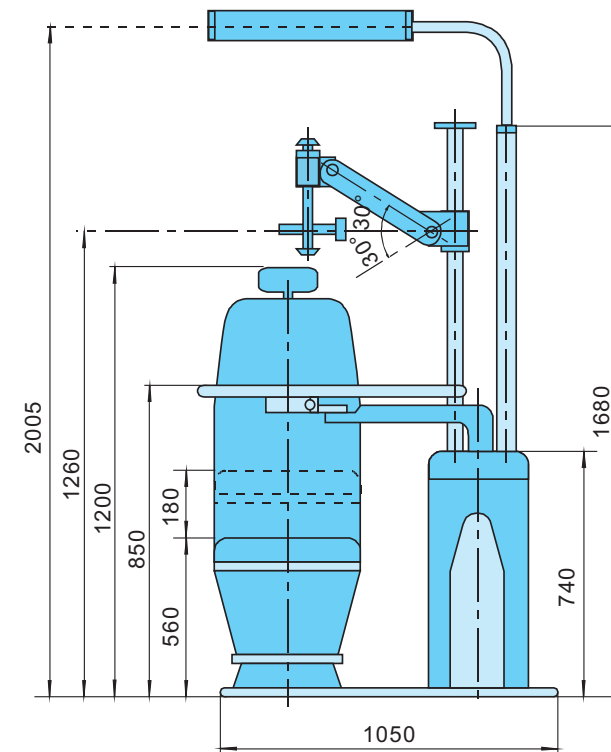
TC-800V OPTHALMIC UNIT & CHAIR

FEATURES & SPECIFICATIONS

Base size.....39inch x 24inch (1000mm x 600mm)
 Tabletop size.....33inch x 16inch (840mm x 405mm)
 Sliding table to accommodate two instruments
 Two rechargeable wells
 Counterbalanced Refractor Arm
 (a) Adjustable Load Range.....8lbs to 20 lbs (3.6kgs to 9kgs)
 (b) Vertical Adjustment Range.....16inch (405mm)
 Table rotate angle.....90°
 Chair rotate.....±90°
 Recline angle of chair.....165°
 Chair height.....20inch ~ 25inch (500mm ~ 640mm)
 Adjustable range of headrest.....4inch (100mm)
 Fluorescent lamp.....12W. (Brightness is adjustable)
 Voltage.....110/220V. (Switch voltage freely.)
 Weight.....485lbs (220kgs)



CE FDA





CE FDA

CS-518 OPHTHALMIC UNIT & CHAIR

Space save type: the minimum room width request is 155cm

SPECIFICATIONS

Table Size.....845mm×405mm
Total Size.....1000mm×752mm×2100mm
Voltage.....Main:220V±10% 50Hz; 110V±10% 60Hz
Table top: 12V
Power.....200W
Net Weight.....220kgs

FEATURES

Arm

Can be moved up and down or spin around.

Electric lift chair

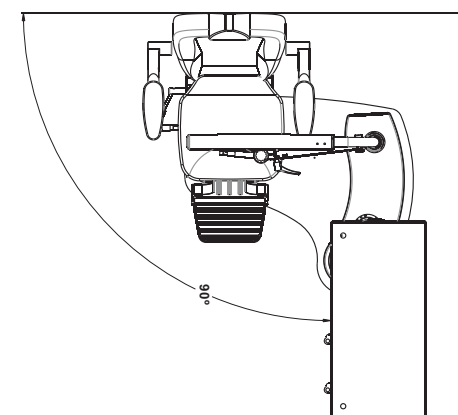
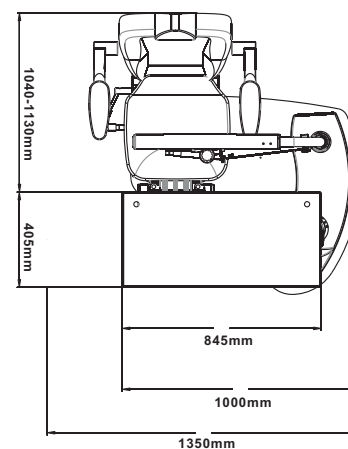
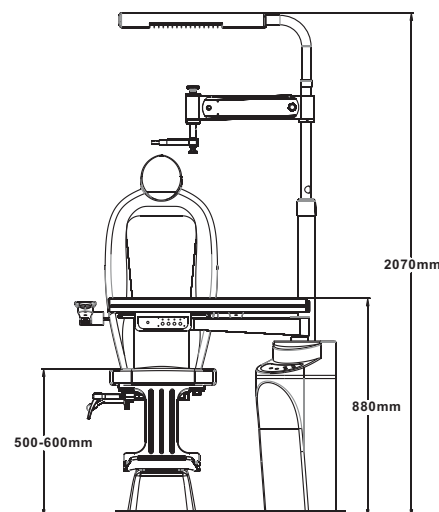
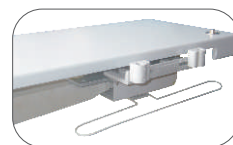
Ultra-luxury European-style.

Sliding table

Table could slide horizontally, the total length of the machine is only after the table is slid out.

Optometry energy-saving lamps

Elegant, energy-saving.



EC-507 ELECTRICAL CHAIR

with foot control

Elevation range.....0-15cm
Power.....110/220V, 60/50HZ,50W



EC-800 ELECTRICAL CHAIR

with foot control

Elevation range: 49~63cm
The arm rest can be lifted up and down freely



Foot control

CE FDA

EC-508 ELECTRICAL CHAIR

with foot control

Elevation range.....0-15cm
Power.....110/220V, 60/50HZ,50W



EC-600 ELECTRICAL CHAIR

with foot control

Elevation range: 53~68cm
Back rest can be lied down 165°
Arm rest can be lift up and down



CE FDA

CC-SC CROSS CYLINDER



0.25D 0.50D
0.75D 1.00D

CE FDA

Shining
handle

CC-S2C CROSS CYLINDER



0.25D 0.50D
0.75D 1.00D

2pcs cross cylinder
packed in 1 box
(both plastic box and
wood box available)

CE FDA

CC-S3C CROSS CYLINDER



0.25D 0.50D
0.75D 1.00D

3pcs cross cylinder
packed in 1 box
(both plastic box and
wood box available)

CE FDA

FCT-P1 FOUR LENS CONFIRMATION TEST

Plastic frame in high quality



CE FDA

0.25D 0.50D
0.75D 1.00D

FCT-Y FOUR LENS CONFIRMATION TEST



0.25D 0.50D
0.75D 1.00D

CE FDA



TCT-Y TWIN LENS CONFIRMATION TEST



0.25D 0.50D
0.75D 1.00D

CE FDA

FCT-P2 FOUR LENS CONFIRMATION TEST

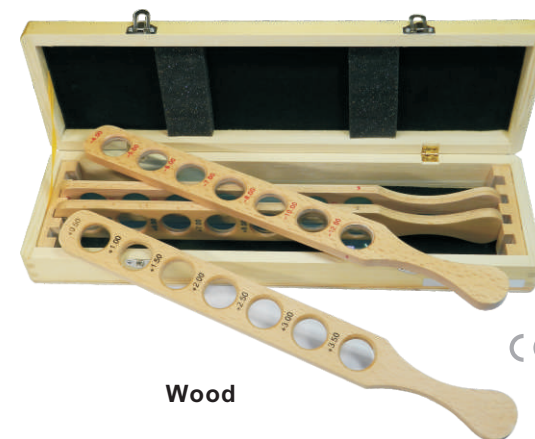
Plastic frame in high quality



CE FDA

0.25D 0.50D
0.75D 1.00D

RR-W RETINOSCOPY RACK SET

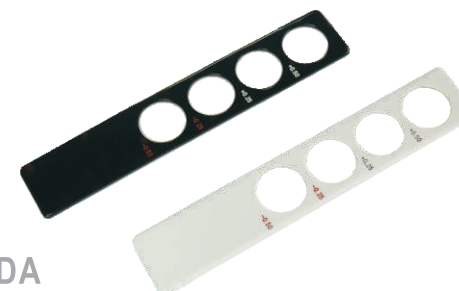


CE FDA

Wood

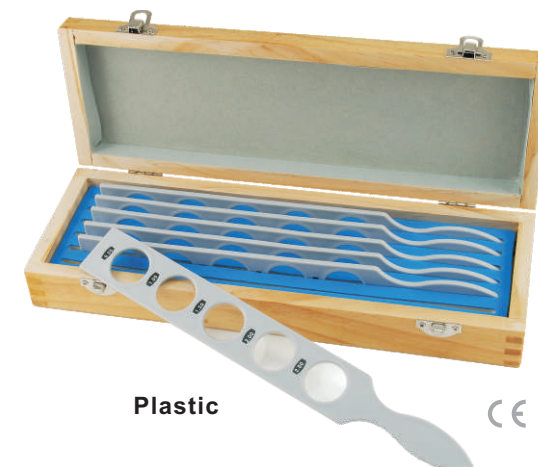
RR-S1 RETINOSCOPY RACK

Plastic



CE FDA

RR-P RETINOSCOPY RACK SET



Plastic

CE FDA

RR-S2 RETINOSCOPY RACK

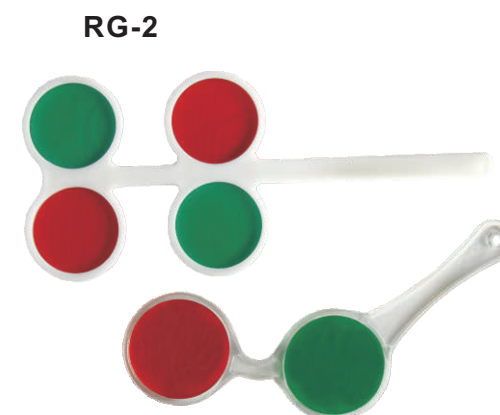
Plastic



CE FDA

RED/GREEN LENS TEST

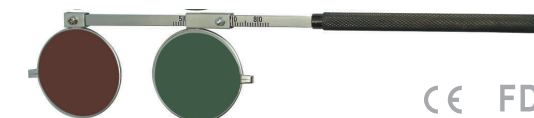
Plastic



CE FDA

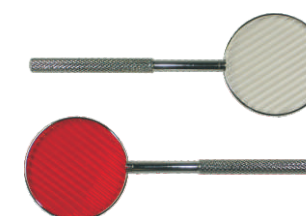
RG-1

RG-8 RED/GREEN LENS TEST



CE FDA

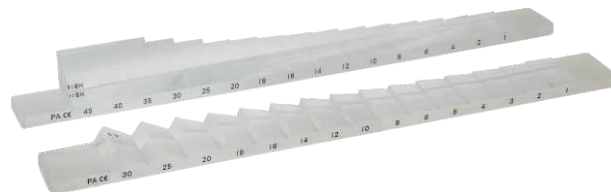
TM-2 RED/WHITE MADDOX TEST



CE FDA

PB-16 PRISM BAR (HORIZONTAL)
PB-15 PRISM BAR (VERTICAL)

PB-16: Diopter(Δ): 1,2,4,6,8,10,12,14,16,18,20,25,30,35,40,45



PB-15: Diopter(Δ): 1,2,3,4,5,6,8,10,12,14,16,18,20,25,30

CE FDA

MOD-1 LORGNETTE PINHOLE OCCLUDER



OD-2 OCCLUDER



OD-4 OCCLUDER



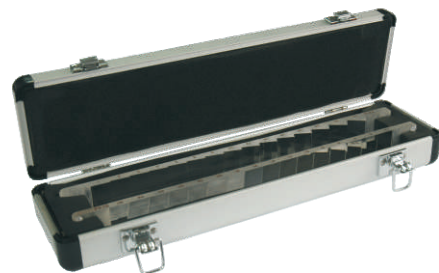
Frosted

T405 RADIAN APPARATUS

Index: 1.53



PB-1516 PRISM BAR SET



PB-15 and PB-16 each in on aluminum case

CE FDA

PR-3 PD RULLER



PR-4 PD RULLER



OD-5 OCCLUDER



OD-6 OCCLUDER



With hole

CP-17A ULTRASONIC CLEANER

FEATURES

Remarkable cleaning effect, Small volume, Large Power, Easy to use. It is equipped with sound water-proof system.

SPECIFICATIONS

Dimensions:240x210x210mm
Weight:2.5kgs
Power:110V/220V,60/50HZ,17A/50W

CD-7810A ULTRASONIC CLEANER

FEATURES

- 1.Cleans discs such as CDs, VCDs, DVDs, etc.
- 2.Use only plain tap water to clean.
- 3.Remove dirts effectively; results can be seen with bare eyes.
- 4.Clean articles to shine just like new.

SPECIFICATIONS

Ultrasonic frequency.....42,000Hz
Tank material.....Stainless steel SUS303
Tank capacity.....750ml
Timer.....5 working circles,choose time freely
Power supply.....AC100-120V,50/60Hz AC220-240V,50/60Hz
Power.....35W(110V),50W(220V)
Unit size.....236(L)x205(W)x170(H)mm
N.W.0.99kgs
G.W.1.07kgs

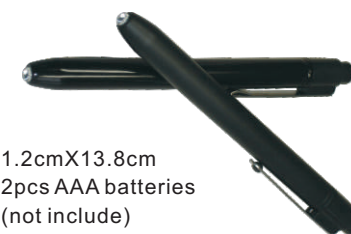
CD-4800 ULTRASONIC CLEANER

SPECIFICATIONS

Ultrasonic frequency.....42,000Hz
Tank material.....Stainless steel SUS303
Tank capacity.....1,375ml(2.4pint)
Quiet,Solid states circuitry
Timer.....5 Cycles,with digital time display
Power supply.....AC100-120V,50/60Hz;AC220-240V,50/60Hz
Power.....60W(110V),70W(220V)
Unit size.....230(L)x180(W)x160(H)mm
N.W.1.75kgs
G.W.2.15kgs

P41 PEN TORCH

LED bulb



Product size:Φ1.2cmX13.8cm
Power source: 2pcs AAA batteries
(not include)



CE

ADVANCEMENTS

- 1.Tightened lid design for effective noise reduction
- 2.Improved products durability and safety by water resistance capability enhancement



CE

FEATURES

- 1.High power transducer for superior cleaning results.
- 2.Larger tank capacity for professional cleaning.
- 3.Isolated-circuit design,keep water away for extra safety.
- 4.First ultrasonic cleaner to introduce cooling fan for prolonged operation.



CE

P203 PEN TORCH

LED bulb

Product size:Φ1.3cmX14.8cm
Power source: 2pcs AAA batteries (not include)



ALE-1600 PATTENLESS LENS EDGER

3D

With high precision and no-parallax scanner
With grooving and safe chamfer function

ALE-1600: Basic model

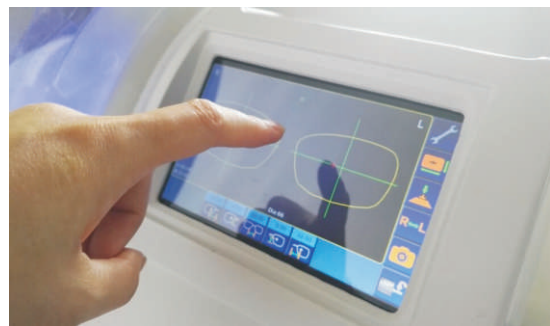
ALE-1600G: Model with grooving and safe chamfering

SPECIFICATIONS

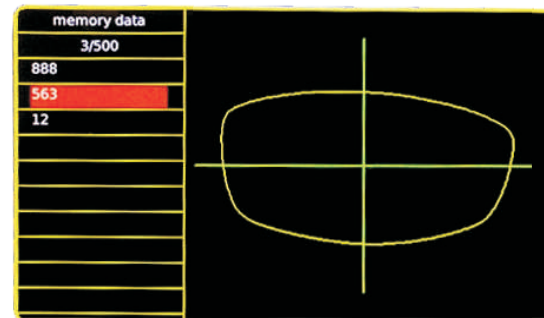
Size.....728mmx600mmx442mm
Package size.....865mmx815mmx785mm
Weight.....75kg
Votage.....115V/60Hz, 230V/50Hz
Power.....1500W
Pump voltage.....115V/60Hz, 230V/50Hz
Pump power.....≤350W
Noise.....≤75dB
Environment Temperature.....5°C~40°C



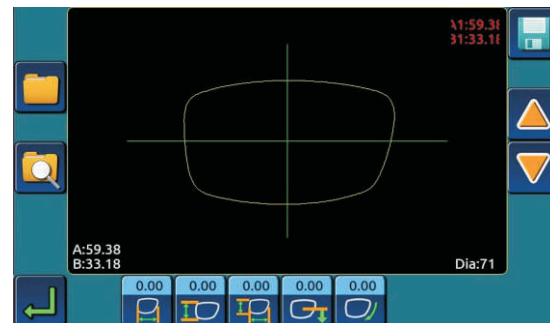
CE



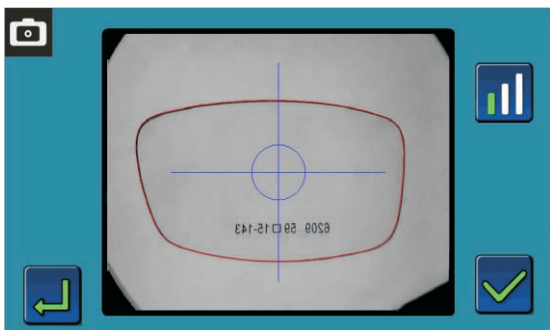
7 inch HD LCD touch screen



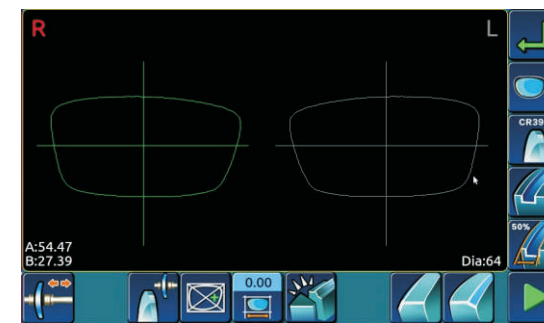
Data storage



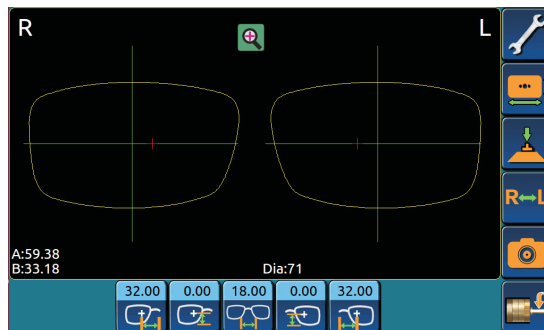
Date form change



3 seconds quick scan



The operation interface is simple and fast



Preview interface can input PD, PH conveniently.



Many different lens material can be satisfied: (PC, HI, HR, Glass)



Have auto-bevel-setting and grooving(You can choose multiple position of bevel and grooving position)



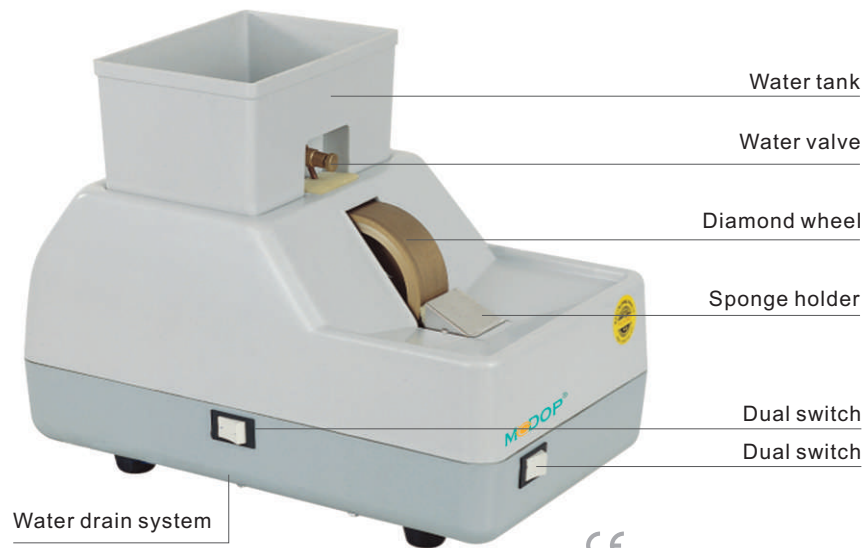
Grooving Safe Chamfer



Precision, no-parallax optical scanner, optical center meter, with fast scanning speed, low failure rate.



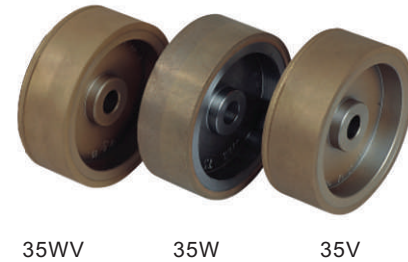
Combined Scanner with Center meter as one



NH-35W HAND EDGER

SPECIFICATION:

Power.....150W
Dimension.....360(L)X200(W)X288(H)mm
Voltage.....110V~120V/60Hz or 200~240V/50Hz



WHEEL OPTIONS

35W	Width 35mm, right rough grinding 16mm, left fine grinding 19mm.	Rough grinding No. 180, fine grinding No. 240, 280, 320(Optional)	
35WV	Width 35mm, right rough grinding 16mm, left fine grinding 19mm edge trueing groove.	Rough grinding No. 180, fine grinding No. 240, 280, 320(Optional)	
35V	Width 35mm, large surface fine grinding, trimming by trueing groove.	Graduations No. 240, 280, 320(Optional)	

NH-100WV HIGH-SPEED HAND EDGER

FEATURES:

Original appearance design
Good adding and draining water system
Selector switch to change the rotating direction.
Good grinding effects: smooth and fine.

WHEEL OPTIONS:



H-83I HAND EDGER



SPECIFICATIONS

Power supply.....AC 100-120V/60Hz,200-240V/50Hz
Motor.....150W
Water pump.....3W
Dimension with packing.....430mmX270mmX280mm
Gross weight.....9kgs

Attention: If the machine won't be used for long, please remember to keep the water container clean without water.

MECHANISM AND ACCESSORIES

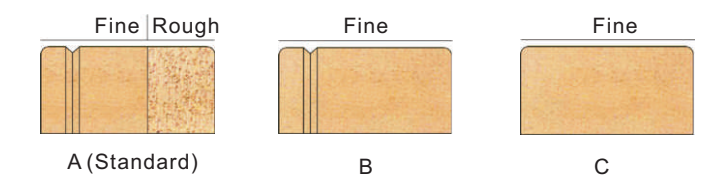
Sensor: The sensor starts/stop the diamond wheel automatically when your hands approach/far away from the grinder work area. The sensor works only when needed, so you can save time and electric energy in safety. The sensor has a long service life, it can be also replaced easily.



Water circulation system: A water container inside the housing can supply water continuously to the wheel by a pump inside. The filter net keep only the clean water to the pump, and the pump can be pulled out freely by hand when changing the water after some time. The filter net can be easily cleaned with brush. The water valve can adjust flux anytime during the grinding.

DIAMOND WHEEL

Width 35mm Diameter 100mm



H-83II HAND EDGER

FEATURES

Same as H-83I, just use ON/OFF switch instead of IR sensor, so that the price is much more competitive.





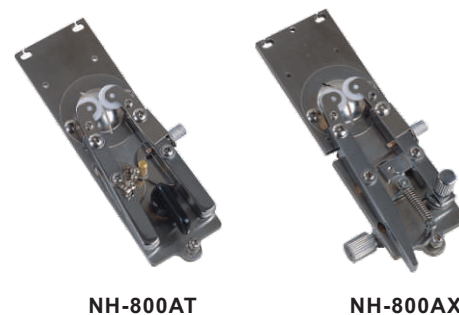
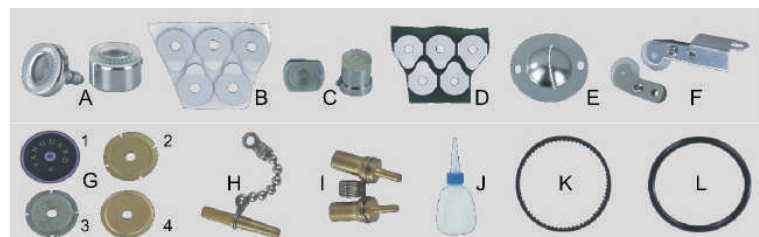
NH-800 AUTOMATIC LENS GROOVER

SPECIFICATIONS

Dimensions.....270(L)X210(W)X150(H)mm
Net Weight.....2.7kgs
Power Requirement.....110V/220V, 90W

FEATURES

- Non corrosive machine body.
- Suitable for plastic and glass lenses.
- Adjustable groove position(front-central-rear)
- No water system required.
- Accurate on all profiles.
- Adjustable groove depth: from 0 to 0.7mm.
- Groove width: 0.65mm.
- Len thickness: from 1.5 to 11mm.
- Len Φ : from 18 to 70mm
- Power: 90W



NH-800G AUTOMATIC LENS GROOVER

FEATURES OF NH-800ATG

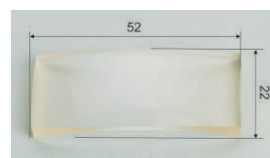
- Improving the structure of grooving table based on origin, the grooving length has been increased greatly.
- Suit for modern and fashion eyeglasses' manufacturing.
- No grooving deformation by improving the lens chuck.
- Improving on the angle of cutter wheel guarantee the steady of grooving.

FEATURES OF NH-800AXG

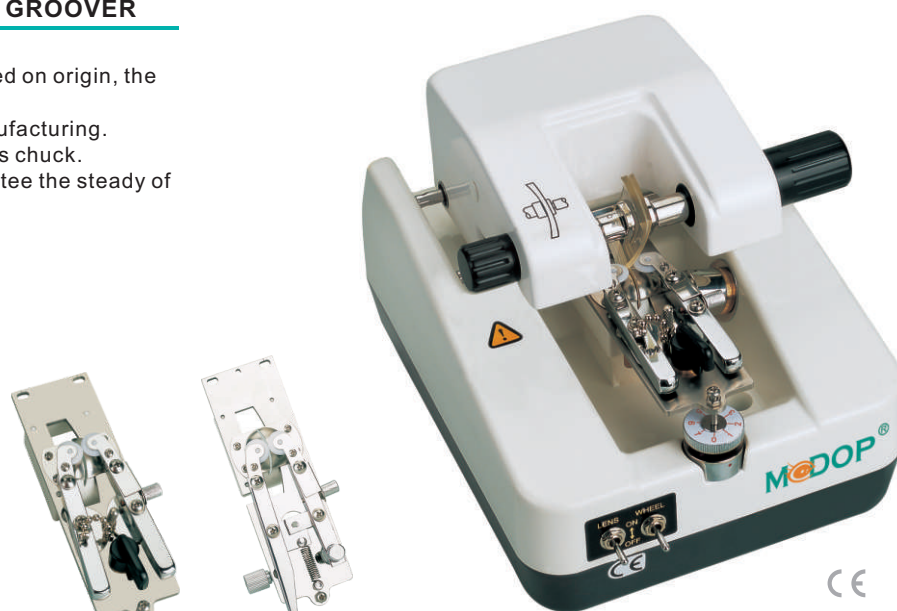
- Manual adjustable, precise controlling
- Limited sizes of grooving
- For oblong corner lenses: $\Phi 22 \times 52 \text{mm}$
- For round corner lenses: $\Phi 22 \times 56 \text{mm}$
- Adopt new cutter wheel for grooving
- Adopt low sound electric motor(100Watt)



Limited size of grooving
Oblong corner lenses:22X56mm



Limited size of grooving
Oblong corner lenses:22X52mm



NH-800ATG

NH-800AXG



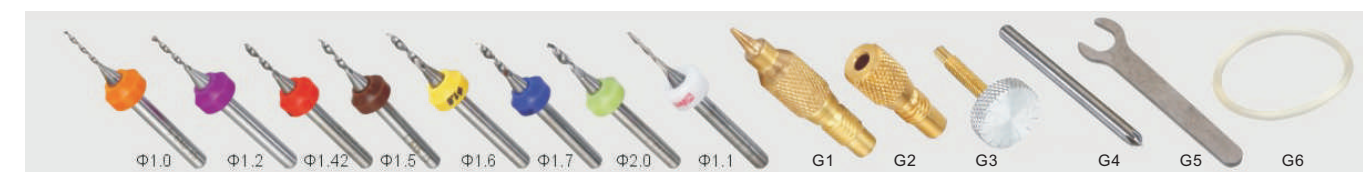
NH-3G DIGITAL LENS DRILLER

MAIN FUNCTIONS

- The operation procedures are highly intelligent and totally digital.
- Compared to the hole position of the pattern lenses, it has higher process accuracy whose process deviation is less than 0.075mm in both X-axis and Y-axis.
- It has auto-position clamping equipment which allows to remain the same process accuracy after the change of clamps.
- The screen shows the drill position and coordinates data, and gives guidance to the operation.
- The hole position memory function allows to process the set hole positions continuously.
- There're two measure modes to choose which are original pattern measure mode and frame position measure mode.
- It has mirroring mode in the process.
- The head can automatically reposition if it's removed from its position accidentally.
- The instrument drills automatically in a set order, and can be corrected by pressing the number button if any hole is missed by wrong operations.

SPECIFICATIONS

Power Requirement.....AC100V-240V DC24V
Power.....50W
Weight.....5kgs
Dimensions.....302x228x270mm
Drilling Speed.....0~5000rpm
Moving Range.....X-axis 155mm Y-axis 38mm



•Drill bit: orange, purple, red, brown, yellow, blue, green

•Milling cutter(white), Probe, Drill chuck, Height adjusting screw, Chamfer tool, Chamfer tool, Wrench, Belt

CP-2AT LENS DRILLING MACHINE

FEATURES

Ideal for drilling holes in glass and plastic lenses.
Opposing taper drill bits system allow holes to be drilled from both sides simultaneously for precise place and avoids chipping and breaking of all lenses, especially those made of glass.
After hole drilled, placed the lens under reamer and lifted upwards to be enlarged to desired size.

SPECIFICATIONS

Dimensions.....250x200x330mm
Weight.....3kgs
Power requirement.....110V/220V 60Hz/50Hz 40W



W84I DIGITAL FRAME WARMER

(HIGH CLASS)

MECHANISM AND ACCESSORIES

Digital temperature: Display the real-time work temperature inside the housing.

Temperature control system: The standard version of frame heater is fitted with an electronic system to monitor and control the actual work temperature inside. It records the latest work temperature when restart the machine.

Heat collecting device: The heated air is collected through one wind outlet for special frame or position of frame.

SPECIFICATIONS

Power supply.....AC 100~120V/60Hz,200~240V/50Hz
Motor.....6W
Available temperature.....40°C~140°C
Power of Heating wires.....580W
Power rating.....800W
Wind speed.....1.8m/s
Weight.....1.26kgs
Dimension.....235mmX125mmX250mm

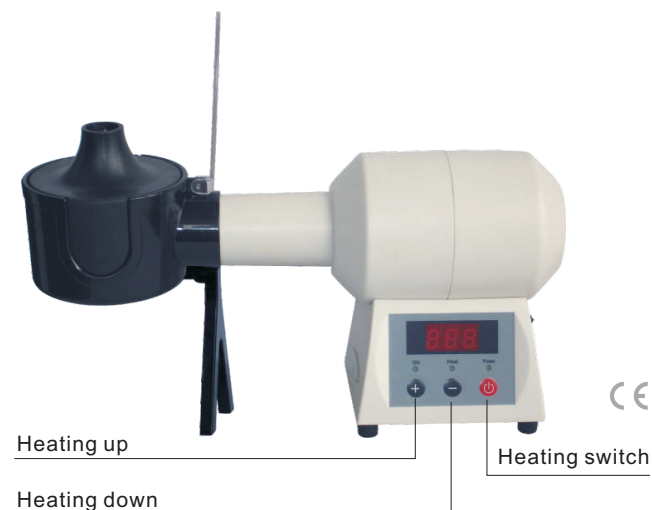
OPERATION GUIDE

1. Turn on power switch
2. Turn on heating switch
3. Adjust the temperature you need by the temperature adjustment key ⊕ ⊖



RJ-84 Round Jet

PB-84 Plastic Baker



RS-30 LENS COLOR MACHINE

SPECIFICATIONS:

1. Make the lens colored simply and quickly.
2. Only for CR-39 Non-coated lens.
3. 6 pcs coloring cups and 2 pcs clips.
4. The main body from stainless steel.
5. Temperature set and automatically kept.
6. Dimension: 49X29X18cm
7. Net weight: 9.4kgs
8. 110V/220V, 1500W

CL-30
Clip



CP-18C UV&PHOTOCHROMIC LENS TESTER

FEATURES

1. UV-400 Test
2. Transmittance Test
3. Radiation-Resistant Test

SPECIFICATIONS

Dimensions.....290x180x110mm
Weight.....1.5kg
Power requirement.....110V/220V 60Hz/50Hz 10W



UVR-3 UV TESTER

1. Anti-UV rays shading monitor.
2. Anti-UV optical lens detector.
3. Anti-radiation monitor-E.M.I.
4. Voltage: 220V / 110V



UV-375 standard lens
for adjusting machine



CP-14 TESTER FOR COLOUR-CHANGING LENS

FEATURES

1. Instantaneous color change of chameleon glass block.
2. It is an ideal instrument for the glasses factories and store.

SPECIFICATIONS

Unit dimension.....220X110X115mm
Net weight.....0.3kg
Power requirements.....110V/220V 60/50Hz AC 30W



CP-29B MULTI-FOCAL LENS TESTER

SPECIFICATIONS

Dimensions.....30x16x15cm
Weight.....1kgs
Power requirement.....110V/220V 60Hz/50Hz 12V



CP-12 POLARISCOPE

FEATURES

1. Easy, clear and simple to test lens or finished glasses, LED lamp.
2. Test the inside stress situation

SPECIFICATIONS

Voltage:100V-240V
Power:12V
Dimension:30 X 16 X 15(cm)
Weight: 1kg



HFC-01 HAND-HELD FUNDUS CAMERA

Manual Focus

High definition and stable image
Non-mydratic and large field of view
Easy one-handed operation and excellent portability
Large data service and a variety of image acquisition mode

It's a portable medical camera for fundus imaging, diagnosis and especially for fundus disease screening.

It's compact, easy to obtain high definition fundus image.

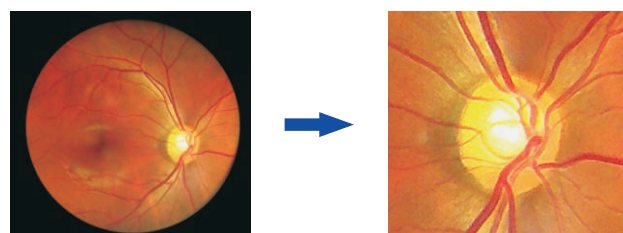
It can be conveniently applied to rapid screening, out diagnosis, bedside diagnosis and remote medical treatment, etc.

FEATURES

- Images real-time display, two times magnification
- Non-mydratic and high definition imaging.
- Micro SD memory card up to 80,000 images
- USB and WiFi connection
- Low weight 450g, movable and portable
- Rechargeable battery provides up to more than 4 hours of continuous operation.
- Optional imaging modules for examination, posterior ophthalmoscope, anterior segment ophthalmoscope, otoscope, and dermatoscope.

SPECIFICATIONS

FOV.....45°
Minimum pupil.....2.5mm
Refractive compensation.....-20D ~ +20D
Light source.....white LED/IR
Image resolution.....1920 x 1080
Focus Mode.....Manual
Screen.....3.5"
Power.....≤6VA
Storage.....Micro SD card
Power supply.....3.7V Lithium Battery
Interface.....Mini USB/WiFi
Size.....160mm X 90mm X 190mm
Weight.....450g(Typical)



CE FDA

HFC-02 PORTABLE FUNDUS CAMERA

Auto Focus

Intelligent and advaced fundus screening

- Non-mydratic and minimum pupil size 2.5mm
- Low light LED flash and 480X800 HD touch screen
- Auto focus and 8 target fixation

Fast and HD fundus imaging

- 16 mega pixe

Android system application

- Android system, easier operation and data storage.
- Reading, wireless transfer
- DICOM interface
- 4G networks
- No additional computer or mobile device will be required
- Integrated design only 560g
- Wireless printing

SPECIFICATIONS

FOV.....45°
Minimum pupil.....2.5mm
Refractive compensation.....-20D ~ +20D
Focus way.....Auo/Manual
Focus Mode.....8 targets fixation
Image resolution.....16MP
Screen.....3.97" multi targets touch screen 800x480
Shoot type.....IR/white light
Image format.....JPEG
Transmission.....USB/WiFi/BT/4G
Storage.....Internal capacity 16GB
Weight.....560g
Power supply.....3.7V 3400mAh Lithium Battery
The battery continuously working time.....6h
(standby time exceeds 24h)
Total charging time.....3.5~4h
Operating system.....PC: Windows system; APP: Android
ID Card reading and collection.....support
NFC card reader.....support
Connect function.....Professional software, APP,
support DICOM, cloud service system,
patient data management software, wireless printing



CE FDA



BIO-1000 VISUAL FIELD ANALYZER

FEATURES

- Comprehensive real-time monitoring, heiji-krakau physiological blind spot monitoring, gaze tracking/head position tracking, automatic measurement of pupil diameter, reduce the impact of pupil effect on visual field detection.
- Personalized design, accurate clinical analysis accurate and rapid examination strategy.
- Under international Goldman standard, providing a variety of classic test procedures and report analysis.

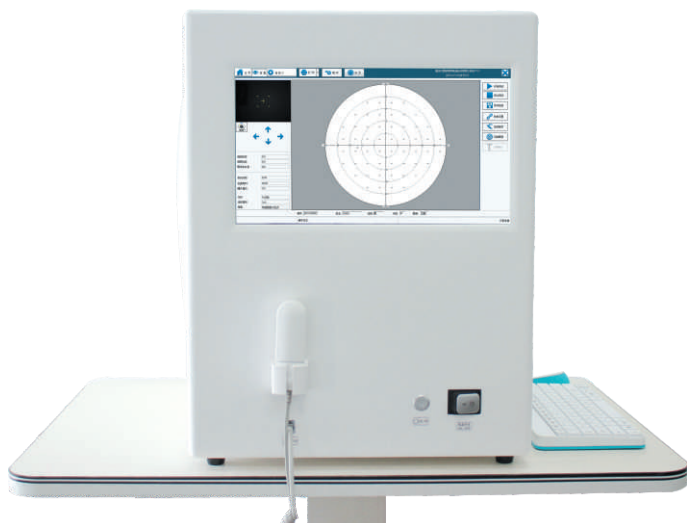
SPECIFICATIONS

Inspection range.....90° full-functioned perimeter
 Inspection distance.....30cm
 Background luminance.....White 31.5asb
 Visual target brightness.....1~10000asb
 Visual target size.....Goldmann III
 Visual target interval time.....200ms
 Standard or adjustment according to patient reflection
 Threshold test model.....Center 5°-16, center 10°-68,
 24-2,30-2,30°-60°, nasal step
 Upper threshold test model.....30°-40, 30°-76,P-60,60°-81,
 60°-120, 90°-135, nasal side
 Special detection strategy.....Esterman monocular,
 Esterman binocular, user-customized test,
 150° driver monocular fast detection,
 150° driver monocular standard detection,
 upper 36° detection, blind spot detection,
 150° horizontal straightness detection
 Pupil size test.....Automatic
 Fixation monitoring.....Blind spot monitoring, eye position
 monitoring, eye position deviation alarm, eye deviation curve
 Environment light detection.....Automatic
 Analysis software.....Reliability analysis, single vision report,
 triple vision report, GPA half vision analysis,
 GPA glaucoma develop ing analysis, VFI vision index analysis
 Operation system.....WIN7 above

Others

Size.....412mm(L)X497mm(W)X513mm(H)
 Weight.....17kg
 Power.....100-240V, 50-60Hz

The BIO-1000 automated perimeter absorbs the advantages of international advanced perimetry devices. It comprises the highly integrated computer, optics, machinery and electronics systems. Incorporated with the advanced configuration, comprehensive software inspection categories and offering up to 11 analysis reports by international standards, the device provides scientific approaches for clinical diagnosis of glaucoma, retinal diseases, visual impairments and related neurological diseases, etc..



ET-200 OPERATION TABLE + DOCTOR CHAIR

FEATURES

- The table is designed and made specially according to ophthalmologists' advices and can apply to various operations for ophthalmology.
- Tabletop lift adopts electro-hydraulic type, easy to operate.
- All cover made of 304 stainless steel, easy to clean.
- Nice appearance, stable performance, can be regarded as and ideal ophthalmological operating table.
- Equipped with electric chair,makes the doctor more comfortable and convenient in operation.



EC-200

ELECTRIC CHAIR

Chair seat diameter.....420mm
 Electric chair elevation range.....460-600mm

Electric chair

- Adjustable armrest support with rotation 180°
- Adjustable backrest in height.
- Chair elevation(up/down):two buttons on the chair base, the doctor can be adjusted by foot.
- Double brakes system on the wheels.



SPECIFICATIONS

OPERATION TABLE

Size of table top.....2080(L)X550(W)mm
 Table top elevation range.....500~700mm
 Head plate Movements.....up≥45° down≥90°
 Leg plate Movements.....up≥30°down≥30°
 Back plate Movements.....up≥45°down ≥20°

Ophthalmological operating table

- Foot switch: several groups of different functions is convenient for operation by doctor.
- Back plate and leg plate: adopted the foot switch that enables flexible and smooth adjustments.
- Head plate: is easy to control by mechanical gear.



SOM-2000D OPERATION MICROSCOPE

(HIGH TECHNOLOGY & ZOOM)

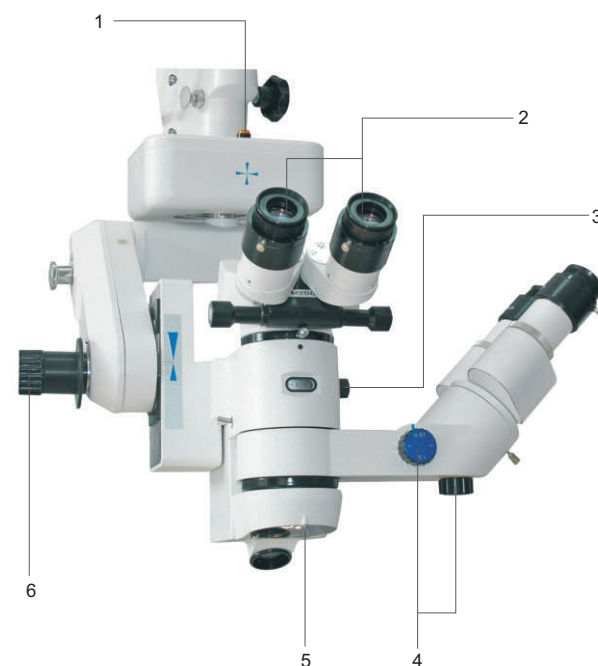


CE FDA

SPECIFICATIONS

Magnifications of Eyepiece.....	12.5X/18B
Big objective foci.....	200mm
Working Distance.....	170mm
Magnifications of Main Microscope.....	4X~27X Continuous Magnification
Magnifications of Assistant Microscope.....	6X/10X/16X
Diameter of Field.....	Φ46mm~Φ85mm
Adjustable Diopter.....	±7D
Adjustable range for Pupil Distance.....	50mm~75mm
Illumination Source.....	12V/100W Halogen lamp
Illumination Type.....	6°+0° Coaxial Illumination, 26° oblique illumination
Coaxial Illumination.....	≥80000lx
Oblique Illumination.....	≥60000lx
Reaching Range of Arm.....	1230mm
Adjustable Vertical Range.....	880mm~1420mm
Fine Focusing Speed and Range.....	≤2mm/s, ≥50mm
Speed for X/Y and Range Voltage.....	≤2mm/s, 50mmX50mm
	AC220V±10%/50Hz±1Hz, AC110V±10%/60Hz±1Hz
Power.....	170VA
Fuse.....	AC250V T4.0A, AC125V T8.0A
Electric safety standard.....	IEC601-1
Whole Packing Volume.....	0.756CBM
Carton Number.....	5
G/weight.....	215kgs

1. X/Y movement and focusing can be automatically centered.
2. Lens is made of glass which imported from Germany. It can reduce the optical aberration. All of the lens are multi-coated, mildew-proof and anti-reflection.
3. Zoom magnification for main microscope.
4. Three-step magnifications for assistant microscope; Fine focusing for assistant microscope keeps the same clearness as main microscope.
5. Special protection device for objective can keep the objective clean.
6. Special motorized inclinations are suitable for special observation angle.



OPTIONAL ACCESSORY

- Teaching tube, Beam Splitter.
- 1/3" CCD Camera, CCD Adapter, Beam Splitter and relevant cables.

SOM-2000DX OPERATION MICROSCOPE

(HIGH TECHNOLOGY & ZOOM)

CHARACTERISTICS

- Develop from SOM-2000D, with the illumination source of 100W medical Xenon lamp which provides a clear and fine observations.
- 2° and +6° coaxial illumination greatly improve the intension and range of red light reflex.



Xenon lamp

SOM-2000E OPERATION MICROSCOPE

Electromagnetic lock and balance technology of the microscope ensure the easy operation and stable orientation. Developed from model SOM-2000D.

FEATURES

- Electromagnetic lock and balance technology of the microscope ensure the easy operation and stable orientation.
- 6°±2° coaxial illumination results in the stronger red light reflection and sharper image of posterior capsula.
- The cold light source is bright and uniform enough, which has no harm to tissue.
- Germany optics and Apochromatic technology ensure clear field of view and high resolution.
- Retinal aspherics and BIOM added on objective could meet the demand of posterior operation.
- The equipment is applied not only in ophthalmic operation, but also in neurosurgical, ENT, Cardio-Thoracic Surgical operations, etc.



CE FDA

SPECIFICATIONS:

Eyepiece Magnification.....	12.5X/18B
Magnifications of Main Microscope.....	4.6X~27X(8.5~46 mm) zoom magnification
Magnifications of Assistant Microscope.....	6.2X,9.3X,14X
Focus.....	f=200
Working Distance.....	195mm
Adjustable Diopter.....	±6D
Adjustable Range for Pupil Distance.....	55mm~75mm
Illumination Type.....	6° coaxial illumination 6°±2°coaxial illumination
Coaxial Illumination.....	≥50000lx
Maximum Height of Microscope.....	1710mm

Reaching Radius of Arm.....	1320mm
Balanced Arm Adjustable Range.....	±300mm
Adjustable Vertical Range.....	880mm~1420mm
Lens Inclination Range.....	-40°(back)/90°(front)
Fine Focus Range.....	50mm
Fine Focus Speed.....	≤2mm/s
Range for X-Y.....	50mmX50mm
Speed for X-Y.....	≤2mm/s
Illumination Source.....	15V/150W, Cold-reflection halogen lamp for medical use
Electrical Safety Standard.....	Conform to Standard GB9706.1-2007, Class I

YZ-20T4 OPERATION MICROSCOPE(multi-function)

Five-step magnifications for main microscope, three-step magnifications for assistant microscope.
Lens made of imported glass from Germany can reduce the optical aberration. All of the lens are multi-coated, mildew-proof and anti-reflection.
Equipped with three Objectives and applicable to OPHTHALMOLOGY, ORTHOPAEDICS, SURGERY.
Oblique illumination can be used for slitting and slitting width is adjustable.
X/Y movement can be automatically centered.



Foot Control

CE FDA

OPTIONAL ACCESSORY

- Teaching tube.
- 1/3" CCD Adapter and relevant cables.

SPECIFICATIONS

Magnification of Eyepiece.....	12.5X/18B
Adjustable Diopter.....	±7D
Adjustable range for Pupil Distance.....	50mm~75mm
Illumination Source.....	12V/100W, Halogen Lamp
Coaxial Illumination.....	≥50000lx
Oblique Illumination.....	≥45000lx
Reaching Range of Arm.....	1040mm
Adjustable Vertical Range.....	850mm~1350mm
Fine Focusing Speed and Range.....	≤2mm/s, ≥50mm
Speed for X/Y and Range.....	≤2mm/s, 50mmX50mm
Voltage.....	AC220V±10%/50Hz±1Hz, AC110V±10%/60Hz±1Hz
Power.....	330VA
Fuse.....	AC250V T4A, AC125V T8A
Electric safety standard.....	GB9706.1-2007 type 1
Whole Packing Volume.....	0.727CBM
Carton Number.....	5
G/weight.....	210kgs

Objective/Working Distance(mm)	Magnifications of Main Microscope	Magnifications of Assistant Microscope	Diameter of Field(for Main Microscope)(mm)
F200/190	4X	6X 10X 16X	Φ58
	6X		Φ38
	10X		Φ23
	16X		Φ14
	25X		Φ9
F250/240	3.2X	5X 8X 12.8X	Φ72
	5X		Φ46
	8X		Φ29
	12.8X		Φ18
	20X		Φ12
F300/290	2.7X	4.2X 6.7X 11X	Φ87
	4.2X		Φ55
	6.7X		Φ34
	11X		Φ22
	17X		Φ14

YZ-20P5 OPERATION MICROSCOPE

(OPHTHALMOLOGY)

SPECIFICATIONS

Magnifications of Eyepiece.....	12.5X/16B
Objective.....	200mm
Working distance.....	190mm
Magnifications of main microscope.....	5.3X,8X,12X
Diameter of field.....	Φ38mm,Φ25mm, Φ17mm
Adjustable diopter.....	±7D
Adjustable range for pupil distance.....	50mm~80mm
Illumination source.....	12V/100W, Halogen Lamp
Maximal resolution.....	100LP/mm
Illumination type.....	6°+0° Coaxial Illumination
Coaxial Illumination.....	≥30000lx
Reaching range of arm.....	870mm
Adjustable vertical range.....	700mm~1100mm
Fine focusing range.....	30mm
Voltage.....	AC220V±10%/50Hz±1Hz, AC110V±10%/60Hz±1Hz
Power.....	120VA
Fuse.....	AC250V 1.25A, AC125V 2.5A
Safety Electrical Standard.....	GB9706.1-2007 type 1
Carton Number.....	1
Whole Packing Volume.....	0.2CBM
G/weight.....	41kgs

OPTIONAL ACCESSORY

- 1/2" or 1/4" CCD Camera, CCD Adapter, Beam Splitter and relevant cables.
- Straight Binocular Tube, Universal Structure (for ENT).
- Five Objectives: f175mm(standard), f250mm, f300mm, f350mm, f400mm (12.5X eyepiece)
- 10X eyepiece
- Desktop Parts (Holding Bracket, Column).
- Portable Package (including two aluminum case and a suitcase with castor).



T605 TOOL SET

Quantity of the tool total: 13pcs
Plier: 7pcs
Screwdriver: 6pcs



T608 TOOL SET

FOR SEMI-RIMLESS GLASSES



T634 TOOL SET

8 slots of pilers,
6 slots of screwdrivers



T619 SCREWDRIVER SET



T602 SMALL SCREWDRIVER



T606 TOOL SET

Quantity of the tool total: 16pcs
Pliers: 9pcs
Screwdriver: 6pcs
File: 1pc



T604 TOOL SET

FOR RIMLESS GLASSES



ACCESSORIES



B1101 12V30W
Bulb for Slit Lamp
YZ-5J/5F/5F1



B1102 12V30W
Bulb for Slit Lamp
YZ-5S/5G



B1103 6V20W
Bulb for Slit Lamp
YZ-5X/5X1



B1201 6V20W
Bulb for Slit Lamp
S350 series



B1301 6V30W
Bulb for Slit Lamp
SL-700 series



E2201 12V50W
Bulb for Projector
ACP-1000



E2101 3.7V5W
LED Bulb for Projector
NH-500LED



K2111
Ink of lensmeter



H2101 3.5V2.5W
Bulb for Retinoscope
YZ-24/24B



H1101 3.5V2.8W
Bulb for Ophthalmoscope
YZ-11D



H1201
Bulb for Ophthalmoscope
DM6D



H2201
Bulb for Retinoscope
SR24A



B1112
Chin-rest rack riser



B1115
Chain cover of YZ slit lamp



A1201
Thermal printing paper
ID:14mm, OD:38mm, L:56mm



B1121
Chinrest Paper

STANDARD PLUGS FOR DIFFERENT COUNTRIES



EP-3 Euro VDE Plug



AP-3 American UL Plug



UKP-3 UK BS Plug



SAP-3 S. A. SABBS Plug